

Synonym

PD-L1,CD274,B7-H1,PDCD1L1,PDCD1LG1

Source

Canine PD-L1, His Tag (PDL-C52H4) is expressed from human 293 cells (HEK293). It contains AA Phe 19 - Arg 236 (Accession # [E2RKZ5-1](#)).

Predicted N-terminus: Phe 19

Molecular Characterization

PD-L1(Phe 19 - Arg 236) XP_005615993.1	Poly-his
---	----------

This protein carries a polyhistidine tag at the C-terminus.

The protein has a calculated MW of 26.6 kDa. The protein migrates as 35-50 kDa under reducing (R) condition (SDS-PAGE) due to glycosylation.

Endotoxin

Less than 1.0 EU per µg by the LAL method.

Purity

>90% as determined by SDS-PAGE.

Formulation

Lyophilized from 0.22 µm filtered solution in PBS, pH7.4. Normally trehalose is added as protectant before lyophilization.

Contact us for customized product form or formulation.

Reconstitution

Please see Certificate of Analysis for specific instructions.

For best performance, we strongly recommend you to follow the reconstitution protocol provided in the CoA.

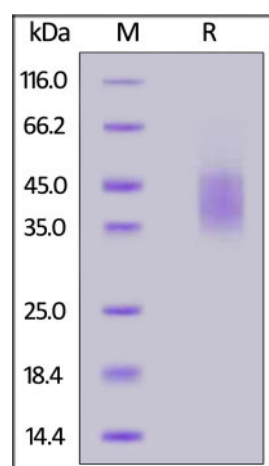
Storage

For long term storage, the product should be stored at lyophilized state at -20°C or lower.

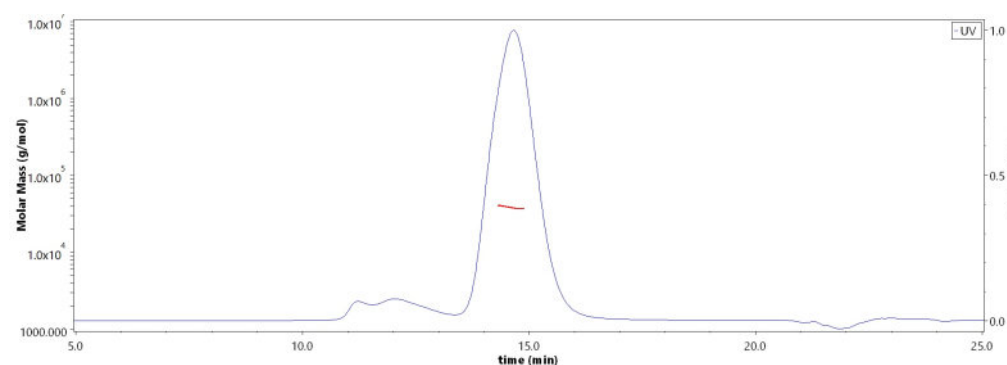
Please avoid repeated freeze-thaw cycles.

This product is stable after storage at:

- -20°C to -70°C for 12 months in lyophilized state;
- -70°C for 3 months under sterile conditions after reconstitution.

SDS-PAGE

Canine PD-L1, His Tag on SDS-PAGE under reducing (R) condition. The gel was stained overnight with Coomassie Blue. The purity of the protein is greater than 90%.

SEC-MALS

The purity of Canine PD-L1, His Tag (Cat. No. PDL-C52H4) is more than 85% and the molecular weight of this protein is around 31-46 kDa verified by SEC-MALS.

[Report](#)

Background

Programmed cell death 1 ligand 1 (PDL1) is also known as B7-H, B7H1, MGC142294, MGC142296, PD-L1, PDCD1L1 and PDCD1LG1, which is a member of the growing B7 family of immune molecules and is involved in the regulation of cellular and humoral immune responses. PDL1 is a cell surface immunoglobulin superfamily with two Ig-like domains within the extracellular region and a short cytoplasmic domain. This protein is broadly expressed in the majority of peripheral tissues as well as hematopoietic cells. Interaction between PDL1 and its receptors belonging to the CD28 family of molecules provide both stimulatory and inhibitory signals in regulating T cell activation and tolerance. PDL1 may inhibit ongoing T-cell responses by inducing apoptosis and arresting cell-cycle progression.

Clinical and Translational Updates

Please contact us via TechSupport@acrobiosystems.com if you have any question on this product.