



## Source

HRP conjugated Monoclonal Anti-MMAE&MMAF Antibody, Mouse IgG1 is a Mouse monoclonal antibody recombinantly expressed from HEK293 cells.

## Species

Mouse

## Isotype

Mouse IgG1 | Mouse kappa

## Conjugate

HRP-Conjugated

## Antibody Type

Recombinant Monoclonal

## Reactivity

Chemical

## Immunogen

MMAE.

## Specificity

Specifically recognizes the target-MMAE.

## Application

Application	Recommended Usage
ELISA	0.5-125 ng/mL

## Purity

>95% as determined by SDS-PAGE.

## Purification

Protein A purified/ Protein G purified

## Formulation

Lyophilized from 0.22 µm filtered solution in PBS, pH7.4 with trehalose as protectant.

Contact us for customized product form or formulation.

## Reconstitution

Please see Certificate of Analysis for specific instructions.

*For best performance, we strongly recommend you to follow the reconstitution protocol provided in the CoA.*

## Storage

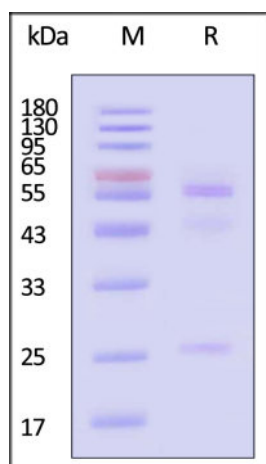
For long term storage, the product should be stored at lyophilized state at -20°C or lower.

*Please protect from light and avoid repeated freeze-thaw cycles.*

This product is stable after storage at:

- -20°C to -70°C for 12 months in lyophilized state;
- -70°C for 3 months under sterile conditions after reconstitution.

## SDS-PAGE



HRP conjugated Monoclonal Anti-MMAE&MMAF Antibody, Mouse IgG1 on SDS-PAGE under reducing (R) condition. The gel was stained with Coomassie

Discounts, Gifts,  
and more!



# HRP conjugated Monoclonal Anti-MMAE&MMAF Antibody, Mouse IgG1

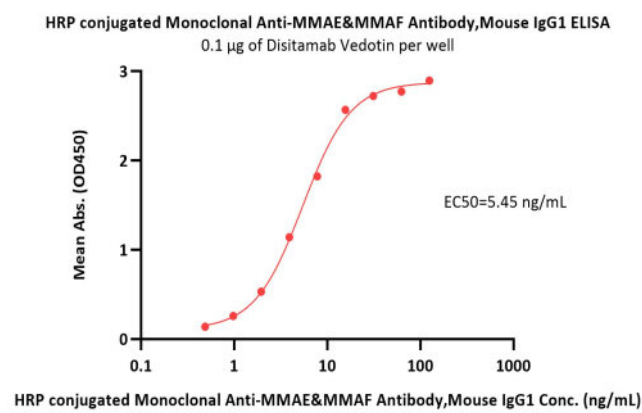
Catalog # MME-PLS104



BIOSYSTEMS  
**Acro**  
Surprise Inside!

Blue. The purity of the protein is greater than 95% (With [Star Ribbon Pre-stained Protein Marker](#)).

## Bioactivity-ELISA



Immobilized Disitamab Vedotin at 1 µg/mL (100 µL/well) can bind HRP conjugated Monoclonal Anti-MMAE&MMAF Antibody, Mouse IgG1 (Cat. No. MME-PLS104) with a linear range of 0.5-16 ng/mL (QC tested).

## Background

Monomethyl auristatin E (MMAE) is a synthetic derivative of dolastatin 10 and functions as a potent mitotic inhibitor by inhibiting tubulin polymerization. MMAE is widely used as a cytotoxic component of antibody-drug conjugates (ADCs) to treat several different cancer types. Anti-MMAE antibody is a Mouse monoclonal antibody. This antibody has been shown to work in applications such as: PK, PD, Immunoassay and ELISA.

## Clinical and Translational Updates

Discounts, Gifts,  
and more!



➤ [www.acrobiosystems.com](http://www.acrobiosystems.com)

8/13/2024