

Synonym

LILRB2,ILT4,LIR2,MIR10,CD85d

Source

Biotinylated Cynomolgus LILRB2, His,Avitag (LI2-C82E3) is expressed from human 293 cells (HEK293). It contains AA Gly 24 - Leu 448 (Accession # [BAE87348.1](#)).

Predicted N-terminus: Gly 24

Molecular Characterization

| | | |
|--|----------|-----|
| LILRB2(Gly 24 - Leu 448) BAE87348.1 | Poly-his | Avi |
|--|----------|-----|

This protein carries a polyhistidine tag at the C-terminus, followed by an Avi tag (Avitag™).

The protein has a calculated MW of 50.2 kDa. The protein migrates as 65-70 kDa under reducing (R) condition (SDS-PAGE) due to glycosylation.

Biotinylation

Biotinylation of this product is performed using Avitag™ technology. Briefly, the single lysine residue in the Avitag is enzymatically labeled with biotin.

Biotin:Protein Ratio

Passed as determined by the HABA assay / binding ELISA.

Endotoxin

Less than 1.0 EU per µg by the LAL method.

Purity

>95% as determined by SDS-PAGE.

Formulation

Lyophilized from 0.22 µm filtered solution in PBS, pH7.4. Normally trehalose is added as protectant before lyophilization.

Contact us for customized product form or formulation.

Reconstitution

Please see Certificate of Analysis for specific instructions.

For best performance, we strongly recommend you to follow the reconstitution protocol provided in the CoA.

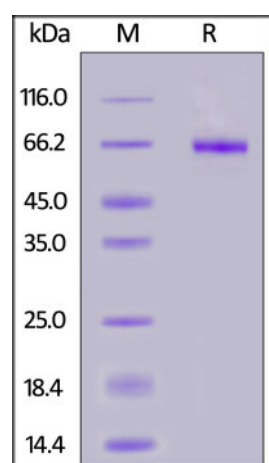
Storage

For long term storage, the product should be stored at lyophilized state at -20°C or lower.

Please avoid repeated freeze-thaw cycles.

This product is stable after storage at:

- -20°C to -70°C for 12 months in lyophilized state;
- -70°C for 3 months under sterile conditions after reconstitution.

SDS-PAGE

Biotinylated Cynomolgus LILRB2, His,Avitag on SDS-PAGE under reducing (R) condition. The gel was stained overnight with Coomassie Blue. The purity of the protein is greater than 95%.

Background

Leukocyte immunoglobulin-like receptor subfamily B member 2 (LILRB2) is also known as CD85 antigen-like family member D (CD85d), Immunoglobulin-like transcript 4 (ILT-4), Monocyte / macrophage immunoglobulin-like receptor 10 (MIR-10), which is a member of the the subfamily B class of LIR receptors. LILRB2

is receptor for class I MHC antigens. LILRB2 recognizes a broad spectrum of HLA-A, HLA-B, HLA-C and HLA-G alleles. LILRB2 competes with CD8A for binding to class I MHC antigens. LILRB2 / CD85d inhibits FCGR1A-mediated phosphorylation of cellular proteins and mobilization of intracellular calcium ions.

Clinical and Translational Updates

Please contact us via TechSupport@acrobiosystems.com if you have any question on this product.