

**Synonym**

LAG3,CD223,FDC

**Source**

Human LAG-3, His Tag(LA3-H5222) is expressed from human 293 cells (HEK293). It contains AA Leu 23 - Leu 450 (Accession # [P18627-1](#) ).

Predicted N-terminus: Leu 23

**Molecular Characterization**

LAG-3(Leu 23 - Leu 450)  
P18627-1 Poly-his

This protein carries a polyhistidine tag at the C-terminus, and has a calculated MW of 47.1 kDa. The predicted N-terminus is Leu 23. The reducing (R) protein migrates as 55-60 kDa in SDS-PAGE due to glycosylation.

**Endotoxin**

Less than 1.0 EU per µg by the LAL method.

**Purity**

>95% as determined by SDS-PAGE.

>95% as determined by SEC-MALS.

**Formulation**

Lyophilized from 0.22 µm filtered solution in PBS, pH7.4 with trehalose as protectant.

Contact us for customized product form or formulation.

**Reconstitution**

Please see Certificate of Analysis for specific instructions.

*For best performance, we strongly recommend you to follow the reconstitution protocol provided in the CoA.*

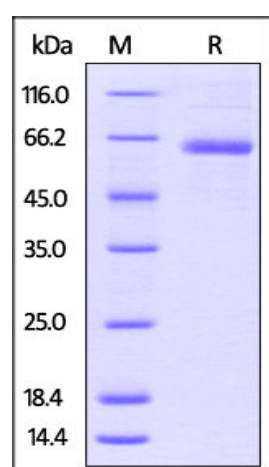
**Storage**

For long term storage, the product should be stored at lyophilized state at -20°C or lower.

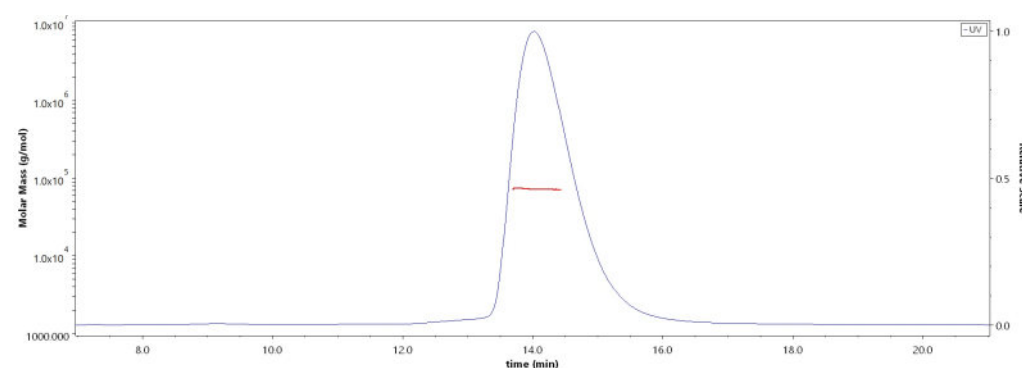
*Please avoid repeated freeze-thaw cycles.*

This product is stable after storage at:

- -20°C to -70°C for 12 months in lyophilized state;
- -70°C for 3 months under sterile conditions after reconstitution.

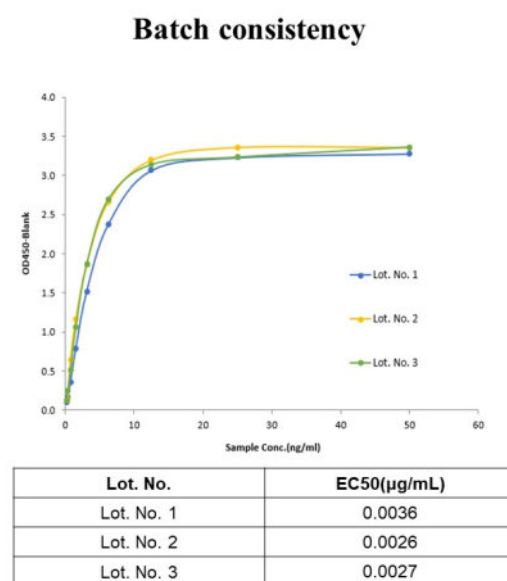
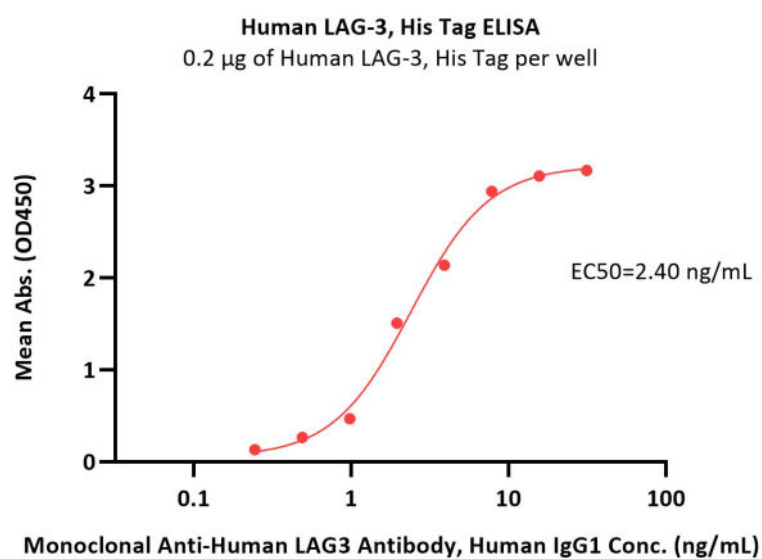
**SDS-PAGE**

Human LAG-3, His Tag on SDS-PAGE under reducing (R) condition. The gel was stained with Coomassie Blue. The purity of the protein is greater than 95%.

**Bioactivity-ELISA****SEC-MALS**

The purity of Human LAG-3, His Tag (Cat. No. LA3-H5222) is more than 95% and the molecular weight of this protein is around 55-75 kDa verified by SEC-MALS.

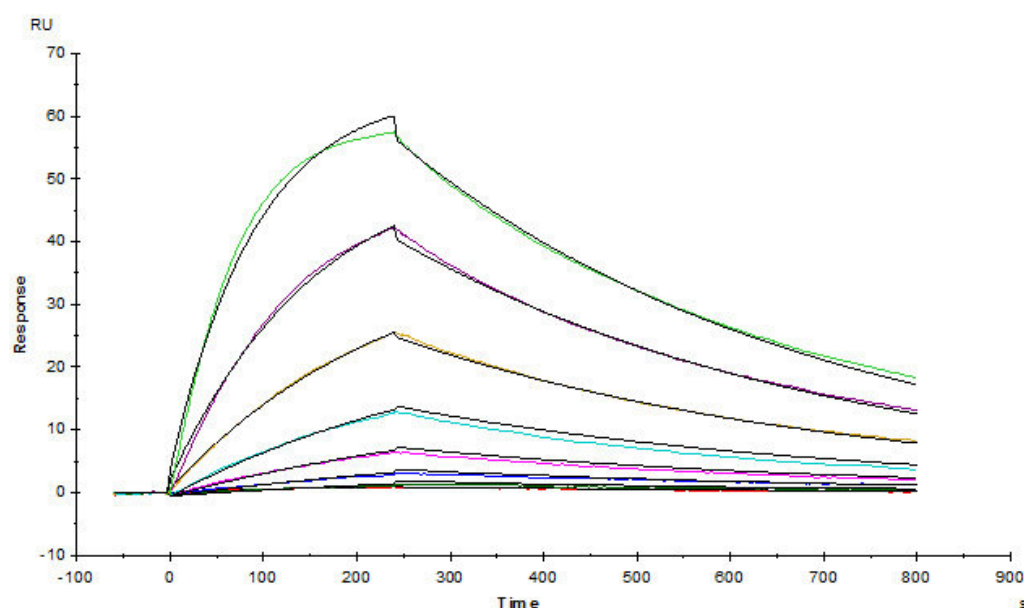
[Report](#)



Immobilized Human LAG-3, His Tag (Cat. No. LA3-H5222) at 2 µg/mL (100 µL/well) can bind Monoclonal Anti-Human LAG3 Antibody, Human IgG1 with a linear range of 0.2-4 ng/mL (QC tested).

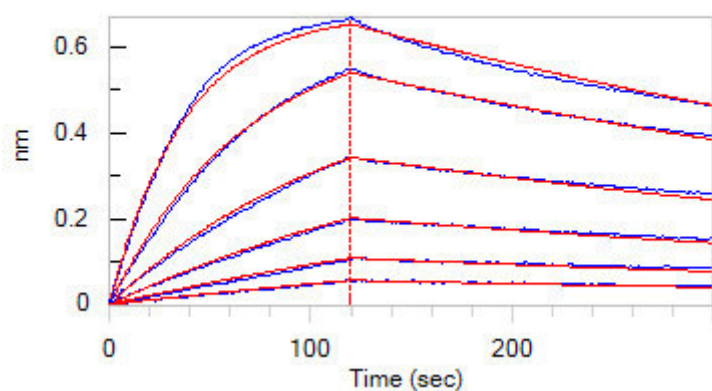
[Report](#)

**Bioactivity-SPR**



Anti-LAG-3 MAb (Human IgG1) captured on CM5 chip via Anti-Human IgG Fc antibodies surface, can bind Human LAG-3, His Tag (Cat. No. LA3-H5222) with an affinity constant of 4.57 nM as determined in a SPR assay (Biacore T200) (Routinely tested).

**Bioactivity-BLI**



Loaded Anti-LAG-3 MAb (Human IgG1) on AHC Biosensor, can bind Human LAG-3, His Tag (Cat. No. LA3-H5222) with an affinity constant of 7.47 nM as determined in BLI assay (ForteBio Octet Red96e) (Routinely tested).

## Background

Lymphocyte activation gene 3 protein (LAG3) is also known as CD antigen CD223 and protein FDC, which belongs to immunoglobulin (Ig) superfamily and contains 4 extracellular Ig-like domains. The LAG3 gene contains 8 exons. The sequence data, exon/intron organization, and chromosomal localization all indicate a close relationship of LAG3 to CD4. LAG3 /CD223 involved in lymphocyte activation. LAG3 /CD223 binds to HLA class-II antigens.

## Clinical and Translational Updates

Please contact us via [TechSupport@acrobiosystems.com](mailto:TechSupport@acrobiosystems.com) if you have any question on this product.