



Synonym

Interleukin-22 receptor subunit alpha-1, IL-22 receptor subunit alpha-1, IL-22R-alpha-1, IL-22RA1, Cytokine receptor class-II member 9, Cytokine receptor family 2 member 9, CRF2-9, ZcytoR11, IL22RA1, IL22R

Source

Human IL-22 R alpha 1, Fc Tag (IL1-H5258) is expressed from human 293 cells (HEK293). It contains AA His 16 - Thr 228 (Accession # [Q8N6P7-1](#)).

Molecular Characterization

IL22RA1(His 16 - Thr 228) Q8N6P7-1	Fc(Pro 100 - Lys 330) P01857
---------------------------------------	---------------------------------

This protein carries a human IgG1 Fc tag at the C-terminus.

The protein has a calculated MW of 50.9 kDa. The protein migrates as 60-66 kDa under reducing (R) condition (SDS-PAGE) due to glycosylation.

Endotoxin

Less than 1.0 EU per µg by the LAL method.

Purity

>95% as determined by SDS-PAGE.

Formulation

Lyophilized from 0.22 µm filtered solution in 50 mM Tris, 100 mM Glycine, 25 mM Arginine, 150 mM NaCl, pH7.5 with trehalose as protectant.

Contact us for customized product form or formulation.

Reconstitution

Please see Certificate of Analysis for specific instructions.

For best performance, we strongly recommend you to follow the reconstitution protocol provided in the CoA.

Storage

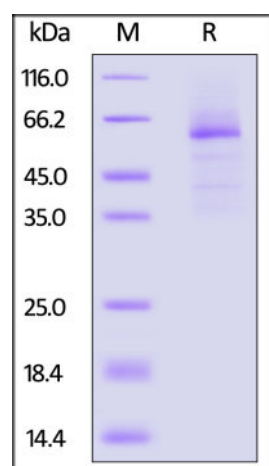
For long term storage, the product should be stored at lyophilized state at -20°C or lower.

Please avoid repeated freeze-thaw cycles.

This product is stable after storage at:

- -20°C to -70°C for 12 months in lyophilized state;
- -70°C for 3 months under sterile conditions after reconstitution.

SDS-PAGE

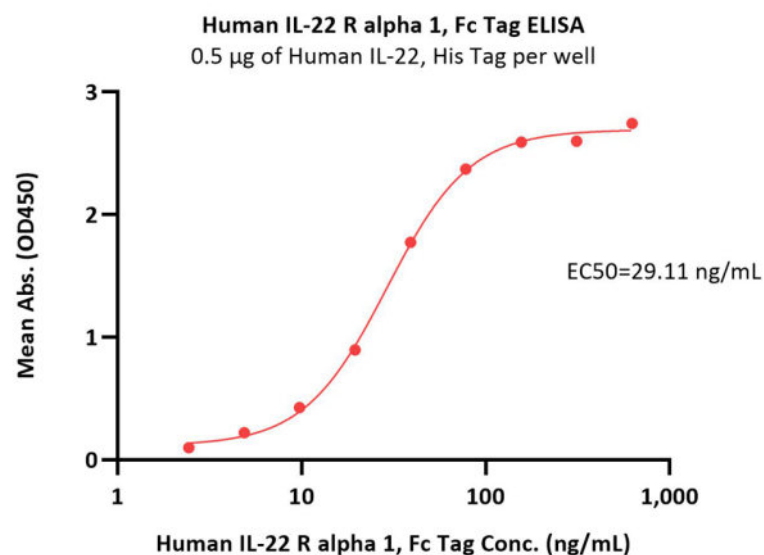


Human IL-22 R alpha 1, Fc Tag on SDS-PAGE under reducing (R) condition. The gel was stained with Coomassie Blue. The purity of the protein is greater than 95%.

Bioactivity-ELISA

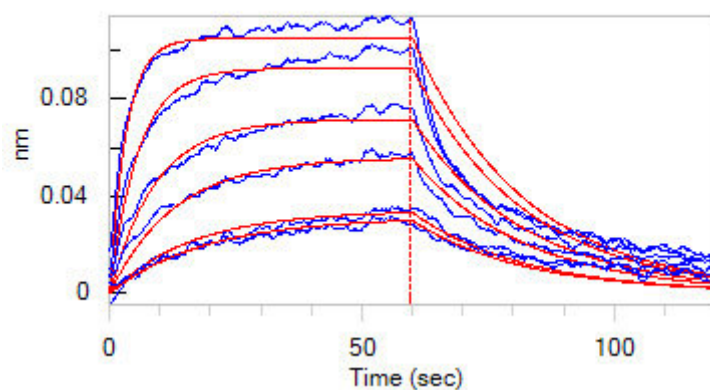
Discounts, Gifts,
and more!





Immobilized Human IL-22, His Tag (Cat. No. IL2-H524a) at 5 µg/mL (100 µL/well) can bind Human IL-22 R alpha 1, Fc Tag (Cat. No. IL1-H5258) with a linear range of 2-78 ng/mL (QC tested).

Bioactivity-BLI



Loaded Human IL-22 R alpha 1 Protein, Fc Tag (Cat. No. IL1-H5258) on Protein A Biosensor, can bind Human IL-24 Protein, His Tag (Cat. No. IL4-H52H4) with an affinity constant of 1.71 µM as determined in BLI assay (ForteBio Octet Red96e) (Routinely tested).

Background

Interleukin-22 receptor subunit alpha-1(IL22RA1) is a component of the receptor for IL20, IL22 and IL24. Component of IL22 receptor formed by IL22RA1 and IL10RB enabling IL22 signaling via JAK/STAT pathways. IL22 also induces activation of MAPK1/MAPK3 and Akt kinases pathways. Component of one of the receptor for IL20 and IL24 formed by IL22RA1 and IL20RB also signaling through STATs activation. Mediates IL24 antiangiogenic activity as well as IL24 inhibitory effect on endothelial cell tube formation and differentiation.

Clinical and Translational Updates

Discounts, Gifts,
and more!

