



### Synonym

IFNAR1,IFNAR,CRF2-1,IFN-R-1,IFNAR-1

### Source

Human IFN-alpha / beta R1 Protein, His Tag(IF1-H5225) is expressed from human 293 cells (HEK293). It contains AA Lys 28 - Lys 436 (Accession # [P17181-1](#)).

Predicted N-terminus: Lys 28

### Molecular Characterization

IFNAR1(Lys 28 - Lys 436)  
P17181-1 Poly-his

This protein carries a polyhistidine tag at the C-terminus.

The protein has a calculated MW of 49.0 kDa. The protein migrates as 65-100 kDa under reducing (R) condition (SDS-PAGE) due to glycosylation.

### Endotoxin

Less than 1.0 EU per µg by the LAL method.

### Purity

>95% as determined by SDS-PAGE.

### Formulation

Lyophilized from 0.22 µm filtered solution in PBS, pH7.4 with trehalose as protectant.

Contact us for customized product form or formulation.

### Reconstitution

Please see Certificate of Analysis for specific instructions.

*For best performance, we strongly recommend you to follow the reconstitution protocol provided in the CoA.*

### Storage

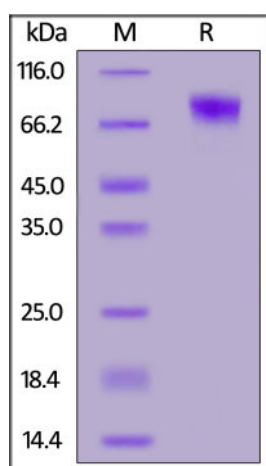
For long term storage, the product should be stored at lyophilized state at -20°C or lower.

*Please avoid repeated freeze-thaw cycles.*

This product is stable after storage at:

- -20°C to -70°C for 12 months in lyophilized state;
- -70°C for 3 months under sterile conditions after reconstitution.

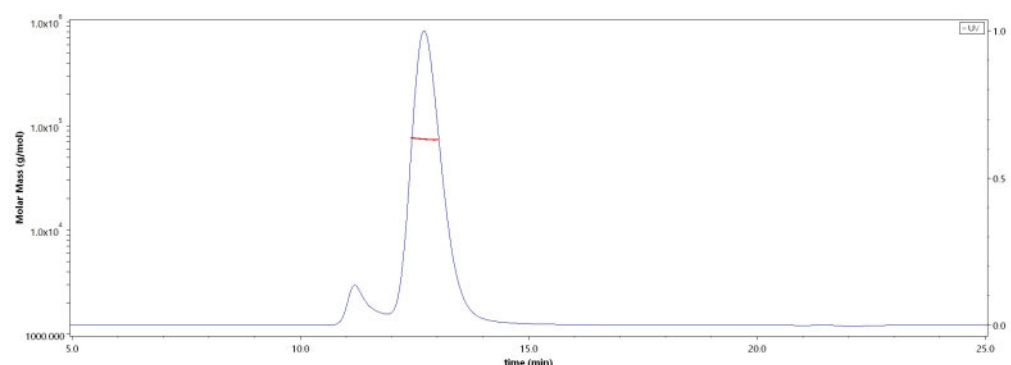
### SDS-PAGE



Human IFN-alpha / beta R1 Protein, His Tag on SDS-PAGE under reducing (R) condition. The gel was stained with Coomassie Blue. The purity of the protein is greater than 95%.

### Bioactivity-BLI

### SEC-MALS

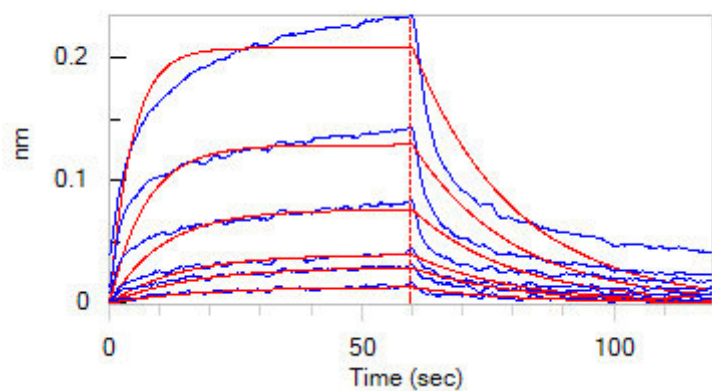


The purity of Human IFN-alpha / beta R1 Protein, His Tag (Cat. No. IF1-H5225) is more than 85% and the molecular weight of this protein is around 67-81 kDa verified by SEC-MALS.

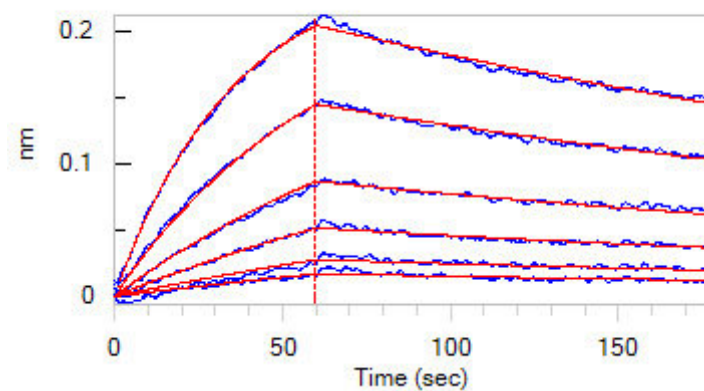
[Report](#)

Discounts, Gifts,  
and more!





Loaded Human IFNAR1, His Tag (Cat. No. IF1-H5225) on NTA Biosensor, can bind Human IFN-alpha 2b Protein, Fc Tag (Cat. No. IFB-H5253) with an affinity constant of 0.689  $\mu$ M as determined in BLI assay (ForteBio Octet Red96e) (QC tested).



Loaded Human IFN-alpha / beta R1, His Tag (Cat. No. IF1-H5225) on NTA Biosensor, can bind Human IFN-alpha 1, Fc Tag (Cat. No. IFA-H5258) with an affinity constant of 11.3 nM as determined in BLI assay (ForteBio Octet Red96e) (Routinely tested).

## Background

Interferon alpha/beta receptor 1 (IFNAR1) is also known as Cytokine receptor class-II member 1, Cytokine receptor family 2 member 1 (CRF2-1), Type I interferon receptor 1, IFNAR, which belongs to the type II cytokine receptor family. IFNAR1 /IFNAR contains four fibronectin type-III domains. IFNAR1 associates with IFNAR2 to form the type I interferon receptor. IFNAR1 is receptor for interferons alpha and beta. IFNAR1 can transduce IFNB signals without the help of IFNAR2, and not activating the Jak-STAT pathway.

## Clinical and Translational Updates

Discounts, Gifts,  
and more!

