

**Synonym**

Glypican 4, glypican proteoglycan 4, glypican-4, GPC4, K-glypican

**Source**

Human Glypican 4, His Tag(GP4-H52H3) is expressed from human 293 cells (HEK293). It contains AA Ala 19 - Ser 529 (Accession # [O75487-1](#)).

**Molecular Characterization**

Glypican 4(Ala 19 - Ser 529) O75487-1	Poly-his
--	----------

This protein carries a polyhistidine tag at the C-terminus

The protein has a calculated MW of 59.5 kDa. The protein migrates as 60-65 kDa under non-reducing (NR) condition (SDS-PAGE) due to glycosylation.

**Endotoxin**

Less than 1.0 EU per  $\mu\text{g}$  by the LAL method.

**Purity**

>90% as determined by SDS-PAGE.

>90% as determined by SEC-MALS.

**Formulation**

Lyophilized from 0.22  $\mu\text{m}$  filtered solution in PBS, pH7.4 with trehalose as protectant.

Contact us for customized product form or formulation.

**Reconstitution**

Please see Certificate of Analysis for specific instructions.

*For best performance, we strongly recommend you to follow the reconstitution protocol provided in the CoA.*

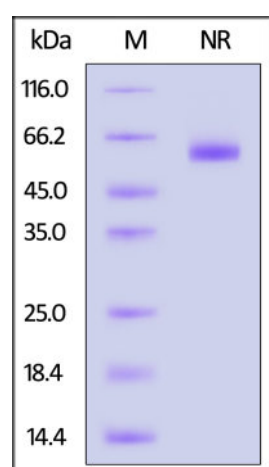
**Storage**

For long term storage, the product should be stored at lyophilized state at  $-20^{\circ}\text{C}$  or lower.

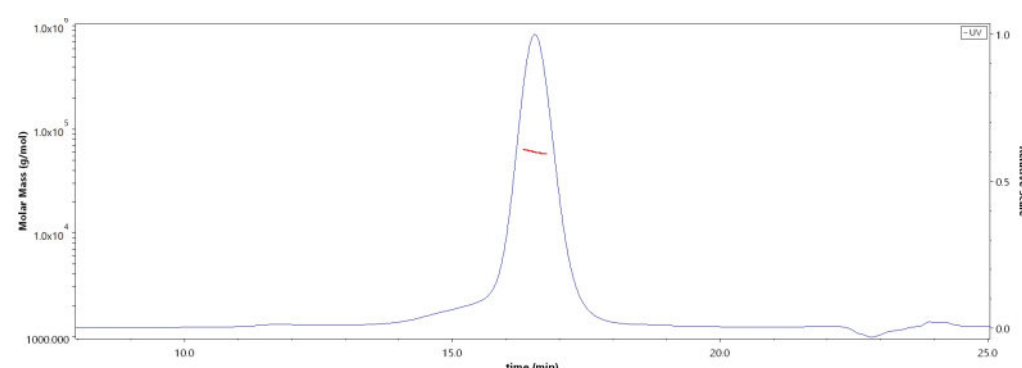
*Please avoid repeated freeze-thaw cycles.*

This product is stable after storage at:

- $-20^{\circ}\text{C}$  to  $-70^{\circ}\text{C}$  for 12 months in lyophilized state;
- $-70^{\circ}\text{C}$  for 3 months under sterile conditions after reconstitution.

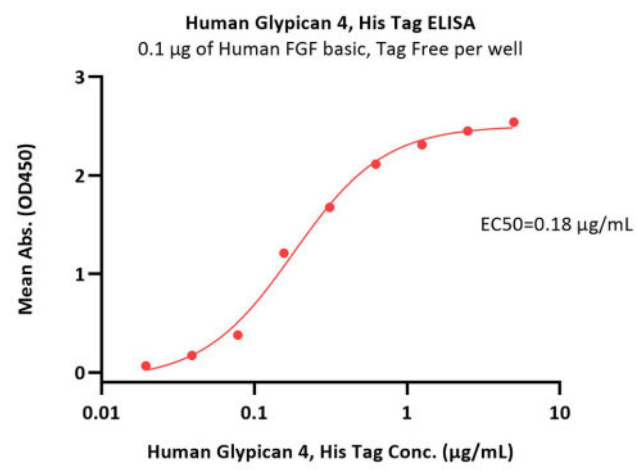
**SDS-PAGE**

Human Glypican 4, His Tag on SDS-PAGE under non-reducing (NR) condition. The gel was stained overnight with Coomassie Blue. The purity of the protein is greater than 90%.

**Bioactivity-ELISA****SEC-MALS**

The purity of Human Glypican 4, His Tag (Cat. No. GP4-H52H3) is more than 90% and the molecular weight of this protein is around 55-69 kDa verified by SEC-MALS.

[Report](#)



Immobilized Human FGF basic, premium grade (Cat. No. BFF-H4117) at 1 µg/mL (100 µL/well) can bind Human Glypican 4, His Tag (Cat. No. GP4-H52H3) with a linear range of 0.02-0.625 µg/mL (QC tested).

## Background

Glypican-4 is a protein that in humans is encoded by the GPC4 gene. Cell surface heparan sulfate proteoglycans are composed of a membrane-associated protein core substituted with a variable number of heparan sulfate chains. Members of the glypican-related integral membrane proteoglycan family contain a core protein anchored to the cytoplasmic membrane via a glycosyl phosphatidylinositol linkage. These proteins may play a role in the control of cell division and growth regulation. The GPC4 gene is adjacent to the 3' end of GPC3 and may also play a role in Simpson-Golabi-Behmel syndrome.

## Clinical and Translational Updates

Please contact us via [TechSupport@acrobiosystems.com](mailto:TechSupport@acrobiosystems.com) if you have any question on this product.