



Synonym

GFR alpha like, GFR alpha-like, GFRAL, GRAL

Source

Human GFR alpha-like, His Tag(GFA-H52H3) is expressed from human 293 cells (HEK293). It contains AA Ser 19 - Glu 351 (Accession # [Q6UXV0-1](#)).

Predicted N-terminus: Ser 19

Molecular Characterization

GFR alpha-like(Ser 19 - Glu 351)
Q6UXV0-1 Poly-his

This protein carries a polyhistidine tag at the C-terminus.

The protein has a calculated MW of 39.7 kDa. The protein migrates as 43-60 kDa when calibrated against [Star Ribbon Pre-stained Protein Marker](#) under reducing (R) condition (SDS-PAGE) due to glycosylation.

Endotoxin

Less than 1.0 EU per µg by the LAL method.

Purity

>95% as determined by SDS-PAGE.

>90% as determined by SEC-MALS.

Formulation

Lyophilized from 0.22 µm filtered solution in PBS, pH7.4 with trehalose as protectant.

Contact us for customized product form or formulation.

Reconstitution

Please see Certificate of Analysis for specific instructions.

For best performance, we strongly recommend you to follow the reconstitution protocol provided in the CoA.

Storage

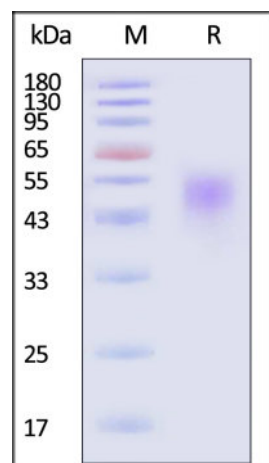
For long term storage, the product should be stored at lyophilized state at -20°C or lower.

Please avoid repeated freeze-thaw cycles.

This product is stable after storage at:

- -20°C to -70°C for 12 months in lyophilized state;
- -70°C for 3 months under sterile conditions after reconstitution.

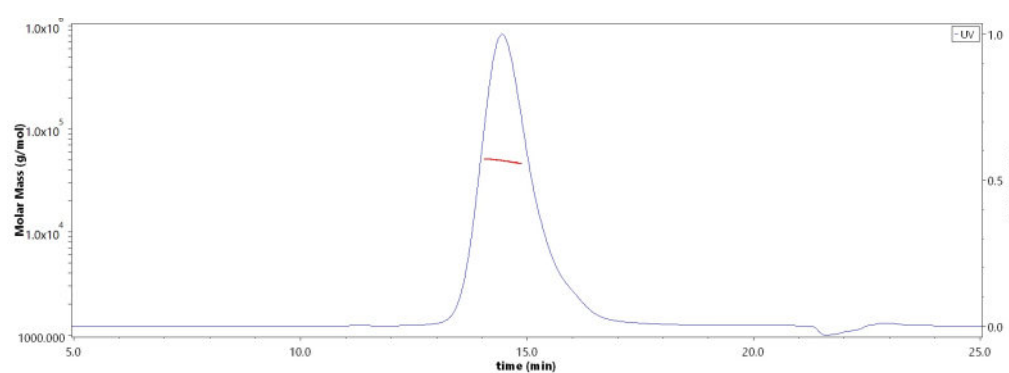
SDS-PAGE



Human GFR alpha-like, His Tag on SDS-PAGE under reducing (R) condition. The gel was stained with Coomassie Blue. The purity of the protein is greater than 95% (With [Star Ribbon Pre-stained Protein Marker](#)).

Bioactivity-ELISA

SEC-MALS



The purity of Human GFR alpha-like, His Tag (Cat. No. GFA-H52H3) is more than 90% and the molecular weight of this protein is around 44-66 kDa verified by SEC-MALS.

[Report](#)

Discounts, Gifts,
and more!

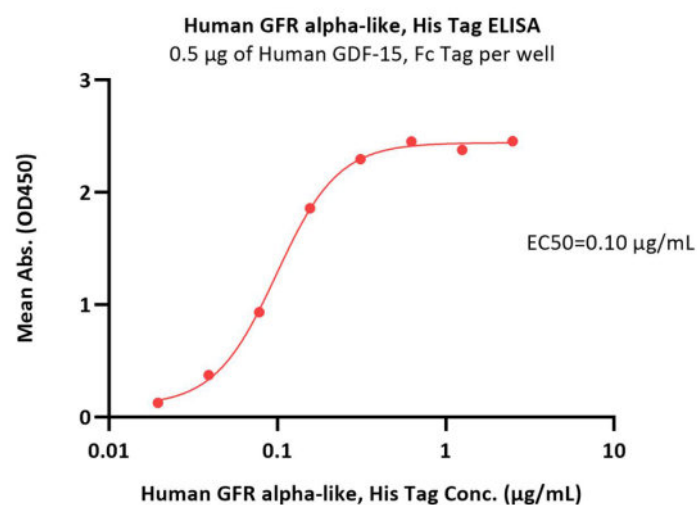


Human GFR alpha-like Protein, His Tag (MALS verified)

Catalog # GFA-H52H3



BIOSYSTEMS
Acro
Surprise Inside!



Immobilized Human GDF-15, Fc Tag (Cat. No. GD5-H5269) at 5 µg/mL (100 µL/well) can bind Human GFR alpha-like, His Tag (Cat. No. GFA-H52H3) with a linear range of 0.02-0.313 µg/mL (QC tested).

Background

GFR alpha-like is also known as GDNF family receptor alpha-like, GFRAL, C6orf144, UNQ9356, PRO34128. Growth differentiation factor-15 (GDF15) is a circulating protein that has been implicated in multiple biological processes, including energy homeostasis, body weight regulation, and cachexia driven by cancer and chronic disease. GDNF family receptor α -like (GFRAL) was recently identified as the neuronal brainstem receptor responsible for mediating the anorectic actions of GDF15. Brainstem-restricted receptor for GDF15 which regulates food intake, energy expenditure and body weight in response to metabolic and toxin-induced stresses. Upon interaction with its ligand, GDF15, interacts with RET and induces cellular signaling through activation of MAPK- and AKT- signaling pathways.

Clinical and Translational Updates

Please contact us via TechSupport@acrobiosystems.com if you have any question on this product.

Discounts, Gifts,
and more!



»» www.acrobiosystems.com

11/23/2023