



**Synonym**

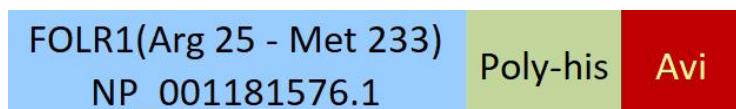
FOLR-1,FBP,FOLR,FR $\alpha$

**Source**

Biotinylated Cynomolgus / Rhesus macaque FOLR1 Protein, His,Avitag(FO1-C82E8) is expressed from human 293 cells (HEK293). It contains AA Arg 25 - Met 233 (Accession # [NP\\_001181576.1](#)).

Predicted N-terminus: Arg 25

**Molecular Characterization**



This protein carries a polyhistidine tag at the C-terminus, followed by an Avi tag (Avitag™).

The protein has a calculated MW of 28.1 kDa. The protein migrates as 35 kDa and 36-41 kDa when calibrated against [Star Ribbon Pre-stained Protein Marker](#) under reducing (R) condition (SDS-PAGE) due to glycosylation.

**Labeling**

*Biotinylation of this product is performed using Avitag™ technology. Briefly, the single lysine residue in the Avitag is enzymatically labeled with biotin.*

**Protein Ratio**

Passed as determined by the HABA assay / binding ELISA.

**Endotoxin**

Less than 1.0 EU per  $\mu$ g by the LAL method.

**Purity**

>90% as determined by SDS-PAGE.

>90% as determined by SEC-MALS.

**Formulation**

Lyophilized from 0.22  $\mu$ m filtered solution in 50 mM Tris, 100 mM Glycine, pH7.5 with trehalose as protectant.

Contact us for customized product form or formulation.

**Reconstitution**

Please see Certificate of Analysis for specific instructions.

*For best performance, we strongly recommend you to follow the reconstitution protocol provided in the CoA.*

**Storage**

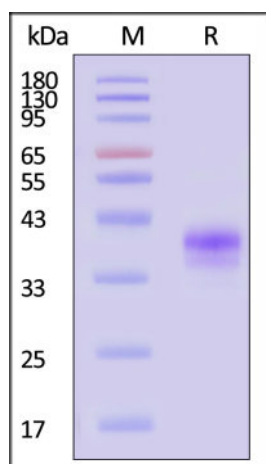
For long term storage, the product should be stored at lyophilized state at -20°C or lower.

*Please avoid repeated freeze-thaw cycles.*

This product is stable after storage at:

- -20°C to -70°C for 12 months in lyophilized state;
- -70°C for 3 months under sterile conditions after reconstitution.

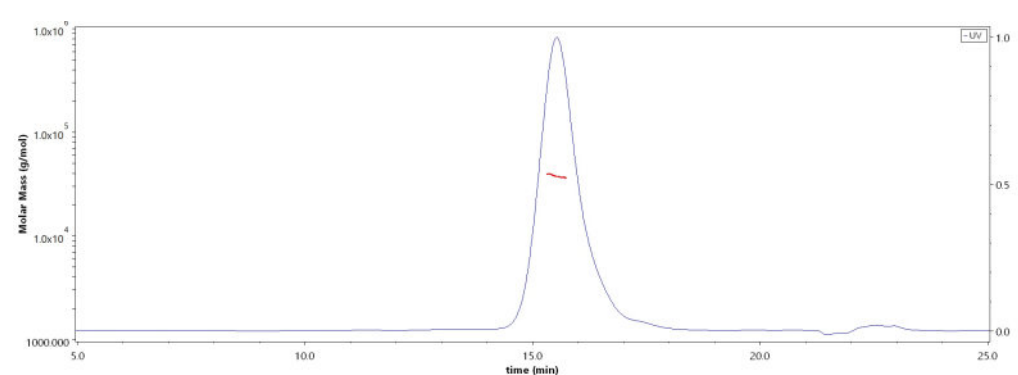
**SDS-PAGE**



Biotinylated Cynomolgus / Rhesus macaque FOLR1 Protein, His,Avitag on SDS-PAGE under reducing (R) condition. The gel was stained with Coomassie Blue. The purity of the protein is greater than 90% (With [Star Ribbon Pre-stained Protein Marker](#)).

**Bioactivity-ELISA**

**SEC-MALS**



The purity of Biotinylated Cynomolgus / Rhesus macaque FOLR1 Protein, His,Avitag (Cat. No. FO1-C82E8) is more than 90% and the molecular weight of this protein is around 32-42 kDa verified by SEC-MALS. [Report](#)

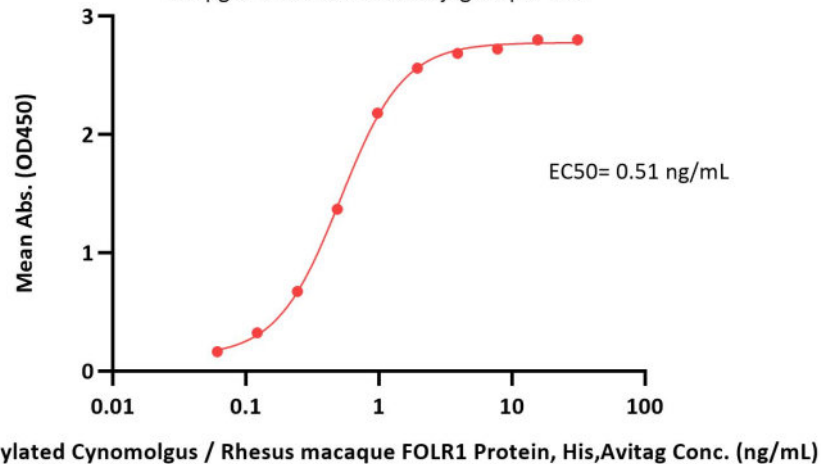
Discounts, Gifts,  
and more!





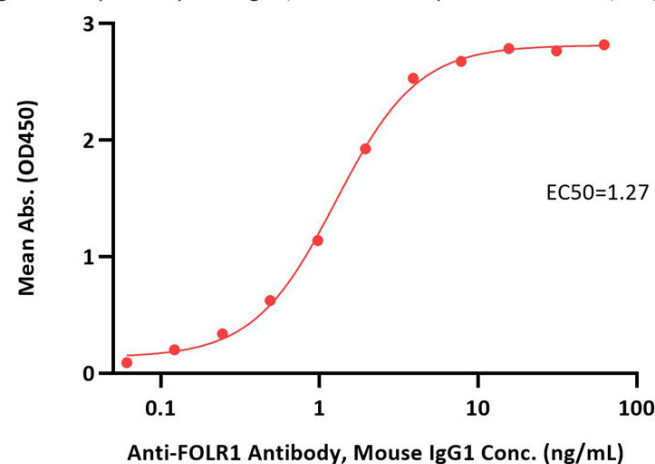
**Biotinylated Cynomolgus / Rhesus macaque FOLR1 Protein, His,Avitag ELISA**

0.5 µg of Folic acid-BSA conjugate per well



**Biotinylated Cynomolgus / Rhesus macaque FOLR1 Protein, His,Avitag ELISA**

0.1 µg of Biotinylated Cynomolgus / Rhesus macaque FOLR1 Protein, His,Avitag per well



Immobilized Folic acid-BSA conjugate at 5 µg/mL (100 µL/well) can bind Biotinylated Cynomolgus / Rhesus macaque FOLR1 Protein, His,Avitag (Cat. No. FO1-C82E8) with a linear range of 0.06-1 ng/mL (QC tested).

Immobilized Biotinylated Cynomolgus / Rhesus macaque FOLR1 Protein, His,Avitag (Cat. No. FO1-C82E8) at 1 µg/mL (100 µL/well) on streptavidin (Cat. No. STN-N5116) precoated (0.5 µg/well) plate can bind Anti-FOLR1 Antibody, Mouse IgG1 with a linear range of 0.1-4 ng/mL (Routinely tested).

**Background**

Folate Receptor 1 (FOLR1) is also known as Folate receptor alpha, Folate Binding Protein (FBP), FOLR, and is a member of the folate receptor (FOLR) family. Members of this gene family have a high affinity for folic acid and for several reduced folic acid derivatives, and mediate delivery of 5-methyltetrahydrofolate to the interior of cells. Mature FOLR1 is an N-glycosylated protein that is anchored to the cell surface by a GPI linkage. FOLR1 is predominantly expressed on epithelial cells and is dramatically upregulated on many carcinomas. FOLR1 is internalized to the endosomal system where it dissociates from its ligand before recycling to the cell surface. A soluble form of FOLR1 can be proteolytically shed from the cell surface into the serum and breast milk. Defects in FOLR1 are the cause of neurodegeneration due to cerebral folate transport deficiency (NCFTD). NCFTD is an autosomal recessive disorder resulting from brain-specific folate deficiency early in life.

**Clinical and Translational Updates**

Discounts, Gifts, and more!

