

**Synonym**

CD3 epsilon & CD3 gamma, CD3E & CD3G

**Source**

Rabbit CD3E&CD3G Heterodimer Protein, His Tag&Flag Tag (CDG-RB52D5) is expressed from human 293 cells (HEK293). It contains AA Gln 22 - Thr 120 (CD3E) & Gln 23 - Asn 111 (CD3G) (Accession # [Q9TUF9-1](#)(CD3E) & [G1SDA3-1](#)(CD3G)).

Predicted N-terminus: Gln 22 (CD3E) & Gln 23 (CD3G)

**Molecular Characterization**

CD3E(Gln 22 - Thr 120) Q9TUF9-1	Poly-his
CD3G(Gln 23 - Asn 111) G1SDA3-1	Flag

Rabbit CD3E&CD3G Heterodimer Protein, His Tag&Flag Tag is produced by co-expression of CD3E and CD3G, has a calculated MW of 16.5 kDa (CD3E) and 15.0 kDa (CD3G). Subunit CD3E is fused with a polyhistidine tag at the C-terminus and subunit CD3G is fused with a flag tag at the C-terminus. The reducing (R) heterodimer protein migrates as 18-20 kDa and 23 kDa due to glycosylation.

**Endotoxin**

Less than 1.0 EU per µg by the LAL method.

**Purity**

>90% as determined by SDS-PAGE.

**Formulation**

Lyophilized from 0.22 µm filtered solution in PBS, pH7.4. Normally trehalose is added as protectant before lyophilization.

Contact us for customized product form or formulation.

**Reconstitution**

Please see Certificate of Analysis for specific instructions.

*For best performance, we strongly recommend you to follow the reconstitution protocol provided in the CoA.*

**Storage**

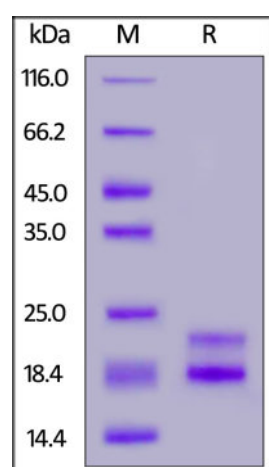
For long term storage, the product should be stored at lyophilized state at -20°C or lower.

*Please avoid repeated freeze-thaw cycles.*

This product is stable after storage at:

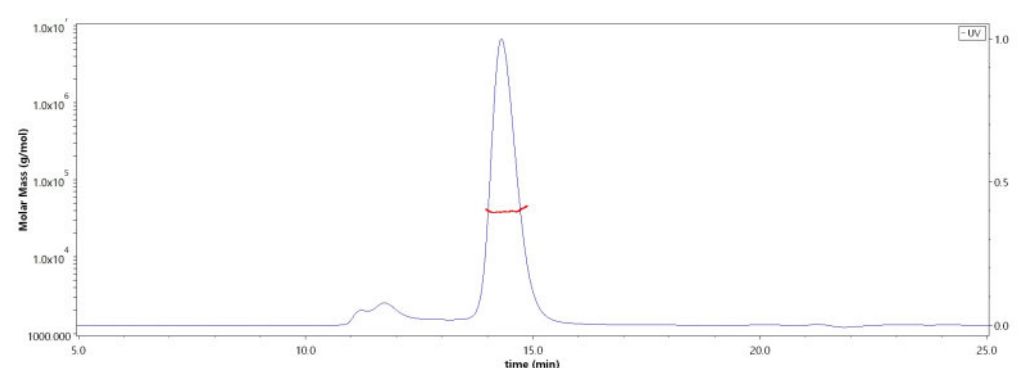
- -20°C to -70°C for 12 months in lyophilized state;
- -70°C for 3 months under sterile conditions after reconstitution.

**SDS-PAGE**



Rabbit CD3E&CD3G Heterodimer Protein, His Tag&Flag Tag on SDS-PAGE under reducing (R) condition. The gel was stained overnight with Coomassie Blue. The purity of the protein is greater than 90%.

**SEC-MALS**



The purity of Rabbit CD3E&CD3G Heterodimer Protein, His Tag&Flag Tag (Cat. No. CDG-RB52D5) was more than 85% and the molecular weight of this protein is around 35-45 kDa verified by SEC-MALS.

[Report](#)

## Background

T-cell surface glycoprotein CD3 delta & CD3 gamma chain, also known as CD3D & CD3G or CD3D&CD3G respectively, are single-pass type I membrane proteins. CD3D, together with CD3- epsilon(CD3E) , CD3-gamma and CD3-zeta, and the T-cell receptor alpha/beta and gamma/delta heterodimers, forms the T cell receptor-CD3 complex. T cell receptor-CD3 complex plays an important role in coupling antigen recognition to several intracellular signal-transduction pathways.

## References

Please contact us via [TechSupport@acrobiosystems.com](mailto:TechSupport@acrobiosystems.com) if you have any question on this product.