

Synonym

CD166,ALCAM,CD6L,KG-CAM,MEMD

Source

Human ALCAM, Fc Tag (CD6-H5259) is expressed from human 293 cells (HEK293). It contains AA Trp 28 - Ala 526 (Accession # NP_001618).

Predicted N-terminus: Trp 28

Molecular Characterization

ALCAM(Trp 28 - Ala 526) NP_001618	Fc(Pro 100 - Lys 330) P01857
--------------------------------------	---------------------------------

This protein carries a human IgG1 Fc tag at the C-terminus.

The protein has a calculated MW of 82.6 kDa. The protein migrates as 95-116 kDa under reducing (R) condition (SDS-PAGE) due to glycosylation.

Endotoxin

Less than 1.0 EU per µg by the LAL method.

Purity

>95% as determined by SDS-PAGE.

Formulation

Lyophilized from 0.22 µm filtered solution in Tris with Glycine, Arginine and NaCl, pH7.5. Normally trehalose is added as protectant before lyophilization.

Contact us for customized product form or formulation.

Reconstitution

Please see Certificate of Analysis for specific instructions.

For best performance, we strongly recommend you to follow the reconstitution protocol provided in the CoA.

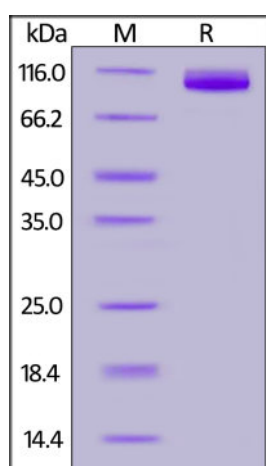
Storage

For long term storage, the product should be stored at lyophilized state at -20°C or lower.

Please avoid repeated freeze-thaw cycles.

This product is stable after storage at:

- -20°C to -70°C for 12 months in lyophilized state;
- -70°C for 3 months under sterile conditions after reconstitution.

SDS-PAGE

Human ALCAM, Fc Tag on SDS-PAGE under reducing (R) condition. The gel was stained overnight with Coomassie Blue. The purity of the protein is greater than 95%.

Background

CD166 antigen is a 100-105 kD type I transmembrane glycoprotein that is a member of the immunoglobulin superfamily of proteins, which is also known as Activated leukocyte cell adhesion molecule (ALCAM) in human, SC-1/DM-GRASP/BEN in the chicken, and KG-CAM in the rat. CD166 is a cell adhesion molecule that binds to CD6. CD166 involved in neurite extension by neurons via heterophilic and homophilic interactions.

References

- (1) [Degen W.G., et al., 1998, Am. J. Pathol. 152:805-813.](#)
- (2) [Skonier J.E., et al., 1996, Biochemistry 35:12287-12291.](#)

Human ALCAM Protein, Fc Tag

Catalog # CD6-H5259



(3) [Bajorath J., et al., 1995, Protein Sci. 4:1644-1647.](#)

Please contact us via TechSupport@acrobiosystems.com if you have any question on this product.