



### Synonym

BTLA,CD272

### Source

Human BTLA (31-150) (M105V, G138S, V148M), Fc Tag(BTA-H5254) is expressed from human 293 cells (HEK293). It contains AA Lys 31 - Ser 150 (Accession # [AAP44003.1](#) (M105V, G138S, V148M)).

Predicted N-terminus: Lys 31

### Molecular Characterization

M105V, G138S, V148M	
BTLA (Lys 31 - Ser 150)	Fc(Pro 100 - Lys 330)
AAP44003.1	P01857

This protein carries a human IgG1 Fc tag at the C-terminus.

The protein has a calculated MW of 40.2 kDa. The protein migrates as 50-60 kDa under reducing (R) condition (SDS-PAGE) due to glycosylation.

### Endotoxin

Less than 1.0 EU per µg by the LAL method.

### Purity

>95% as determined by SDS-PAGE.

### Formulation

Lyophilized from 0.22 µm filtered solution in 50 mM Tris, 100 mM Glycine, 25 mM Arginine, 150 mM NaCl, pH7.5 with trehalose as protectant.

Contact us for customized product form or formulation.

### Reconstitution

Please see Certificate of Analysis for specific instructions.

*For best performance, we strongly recommend you to follow the reconstitution protocol provided in the CoA.*

### Storage

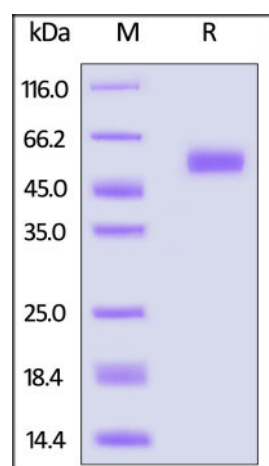
For long term storage, the product should be stored at lyophilized state at -20°C or lower.

*Please avoid repeated freeze-thaw cycles.*

This product is stable after storage at:

- -20°C to -70°C for 12 months in lyophilized state;
- -70°C for 3 months under sterile conditions after reconstitution.

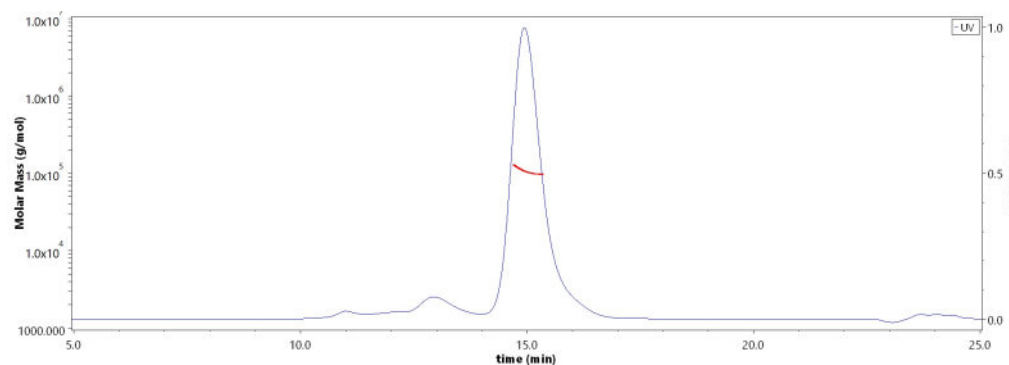
### SDS-PAGE



Human BTLA (31-150) (M105V, G138S, V148M), Fc Tag on SDS-PAGE under reducing (R) condition. The gel was stained with Coomassie Blue. The purity of the protein is greater than 95%.

### Bioactivity-ELISA

### SEC-MALS

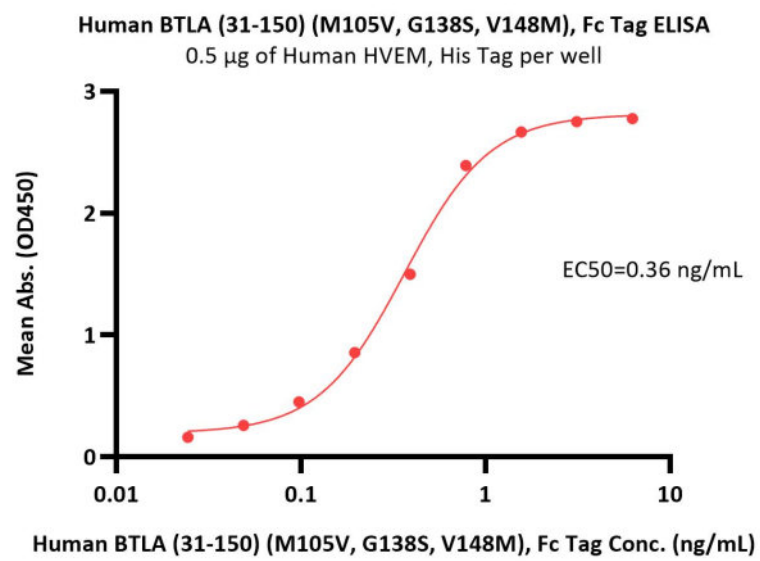


The purity of Human BTLA (31-150) (M105V, G138S, V148M), Fc Tag (Cat. No. BTA-H5254) is more than 85% and the molecular weight of this protein is around 95-115 kDa verified by SEC-MALS.

[Report](#)

Discounts, Gifts,  
and more!





Immobilized Human HVEM, His Tag (Cat. No. HVM-H52E9) at 5 µg/mL (100 µL/well) can bind Human BTLA (31-150) (M105V, G138S, V148M), Fc Tag (Cat. No. BTA-H5254) with a linear range of 0.02-0.8 ng/mL (QC tested).

## Background

B- and T-lymphocyte attenuator (BTLA) is also known as B- and T-lymphocyte-associated protein, CD antigen CD272. BTLA contains one Ig-like V-type (immunoglobulin-like) domain. As a lymphocyte inhibitory receptor, BTLA / CD272 inhibits lymphocytes during immune response. BTLA / CD272 can interact with tyrosine phosphatases PTPN6/SHP-1 and PTPN11/SHP-2, and interact with TNFRSF14/HVEM.

## Clinical and Translational Updates

Please contact us via [TechSupport@acrobiosystems.com](mailto:TechSupport@acrobiosystems.com) if you have any question on this product.

Discounts, Gifts,  
and more!

