



**Source**

Anti-Bevacizumab Antibody (AY10) is a Mouse monoclonal antibody produced from a hybridoma created by fusing SP2/0 myeloma and Mouse B-lymphocytes.

**Clone**

AY10

**Species**

Mouse

**Isotype**

Mouse IgG1/kappa

**Antibody Type**

Hybridoma Monoclonal

**Reactivity**

Human

**Immunogen**

Bevacizumab.

**Specificity**

Recognizes Bevacizumab specifically, no cross reactivity with other humanized antibodies.

**Application**

| Application | Recommended Usage |
|-------------|-------------------|
| ELISA       | 10-20000 ng/mL    |

**Purity**

>95% as determined by SDS-PAGE.

>95% as determined by SEC-MALS.

**Purification**

Protein A purified/ Protein G purified

**Formulation**

Lyophilized from 0.22 µm filtered solution in Tris with Glycine, Arginine and NaCl, pH7.5 with trehalose as protectant.

Contact us for customized product form or formulation.

**Reconstitution**

Please see Certificate of Analysis for specific instructions.

*For best performance, we strongly recommend you to follow the reconstitution protocol provided in the CoA.*

**Storage**

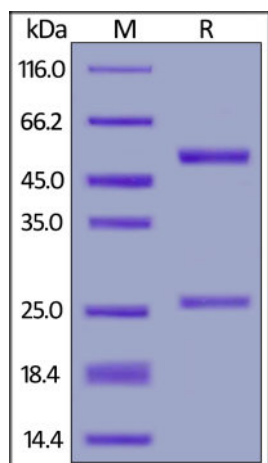
For long term storage, the product should be stored at lyophilized state at -20°C or lower.

*Please avoid repeated freeze-thaw cycles.*

This product is stable after storage at:

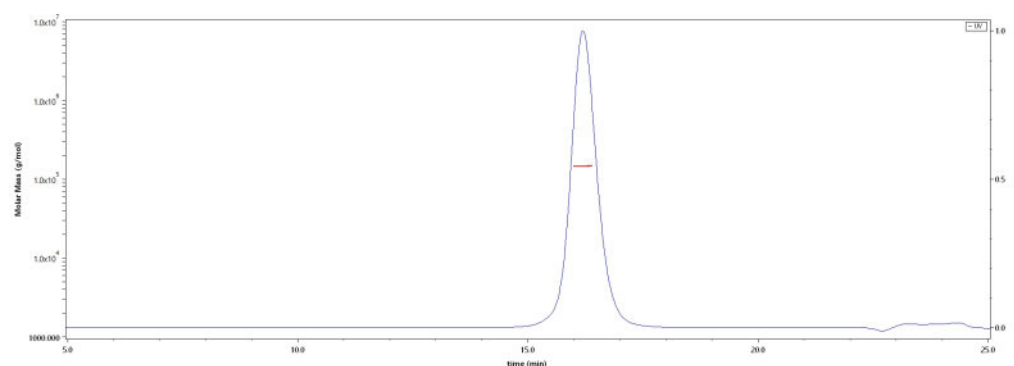
- 4-8°C for 12 months in lyophilized state;
- -70°C for 12 months under sterile conditions after reconstitution.

**SDS-PAGE**



Anti-Bevacizumab Antibody (AY10) on SDS-PAGE under reducing (R) condition. The gel was stained with Coomassie Blue. The purity of the protein

**SEC-MALS**



The purity of Anti-Bevacizumab Antibody (AY10) (Cat. No. BEB-Y10) is more than 95% and the molecular weight of this protein is around 135-155 kDa

Discounts, Gifts,  
and more!



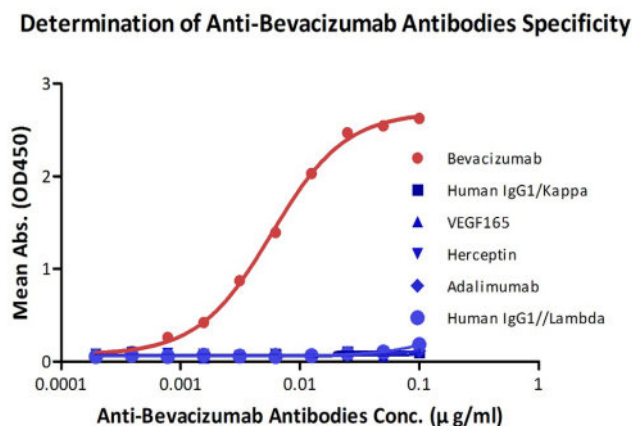
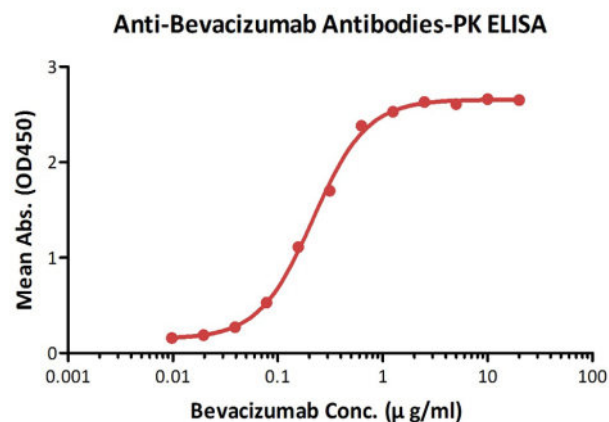


is greater than 95%.

verified by SEC-MALS.

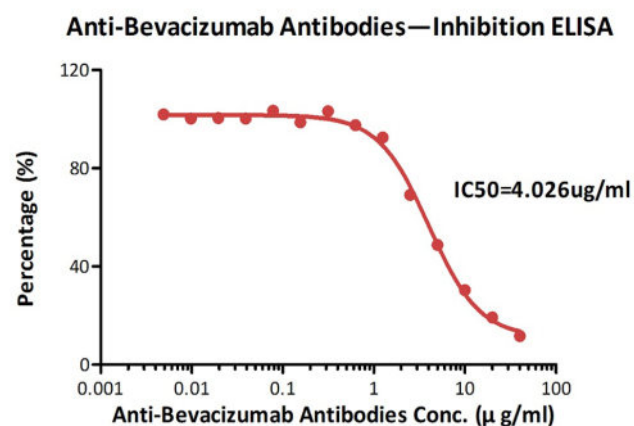
[Report](#)

### Bioactivity-ELISA



Detection of bevacizumab by bridging ELISA in serum. Immobilized Anti-Bevacizumab Antibody (AY10) (Cat. No. BEB-Y10) at 2 µg/mL, add increasing concentrations of bevacizumab (10% human serum) and then add Biotinylated Anti-Bevacizumab Antibody (AY13) (Cat. No. BEB-BY13) at 2 µg/mL. Detection was performed using HRP-conjugated streptavidin with a sensitivity of 0.4 µg/mL (QC tested).

Immobilized Bevacizumab at 1 µg/mL (100 µL/well) can bind Anti-Bevacizumab Antibody (AY10) (Cat. No. BEB-Y10) with a linear range of 0.39-25 ng/mL.



Immobilized Bevacizumab at 2 µg/mL (100 µL/well) can bind pre-mixed Anti-Bevacizumab Antibody (AY10) (Cat. No. BEB-Y10) and Biotinylated Human VEGF165, His,Avitag (Cat. No. VE5-H82Q0) with a inhibition rate of 81%.

### Background

A recombinant humanized monoclonal IgG1 antibody that binds to and inhibits the biologic activity of human vascular endothelial growth factor (VEGF). Bevacizumab contains human framework regions and the complementarity-determining regions of a murine antibody that binds to VEGF. Bevacizumab is produced in a Chinese Hamster Ovary mammalian cell expression system in a nutrient medium containing the antibiotic gentamicin and has a molecular weight of approximately 149 kilodaltons.

### Clinical and Translational Updates

Discounts, Gifts,  
and more!

