

Synonym

CD48, BCM1, SLAMF2, BLAST, BLAST1, MEM-102, TCT.1, BCM-1, SLAMF-2, BLAST-1

Source

Human CD48, His Tag(BC1-H5226) is expressed from human 293 cells (HEK293). It contains AA Gln 27 - Ser 220 (Accession # [AAH16182](#)). Predicted N-terminus: Gln 27

Molecular Characterization

CD48(Gln 27 - Ser 220)
AAH16182 Poly-his

This protein carries a polyhistidine tag at the C-terminus

The protein has a calculated MW of 23.2 kDa. The protein migrates as 35-45 kDa under reducing (R) condition (SDS-PAGE) due to glycosylation.

Endotoxin

Less than 1.0 EU per µg by the LAL method.

Purity

>95% as determined by SDS-PAGE.

>90% as determined by SEC-MALS.

Formulation

Lyophilized from 0.22 µm filtered solution in PBS, pH7.4 with trehalose as protectant.

Contact us for customized product form or formulation.

Reconstitution

Please see Certificate of Analysis for specific instructions.

For best performance, we strongly recommend you to follow the reconstitution protocol provided in the CoA.

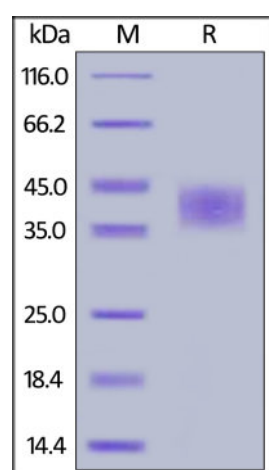
Storage

For long term storage, the product should be stored at lyophilized state at -20°C or lower.

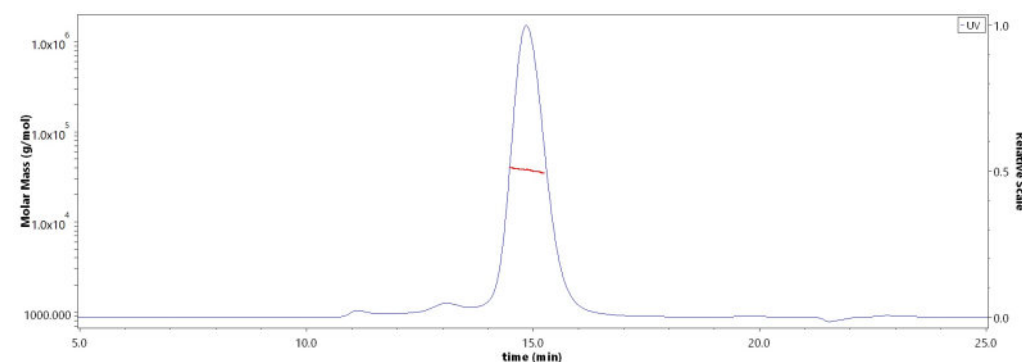
Please avoid repeated freeze-thaw cycles.

This product is stable after storage at:

- -20°C to -70°C for 12 months in lyophilized state;
- -70°C for 3 months under sterile conditions after reconstitution.

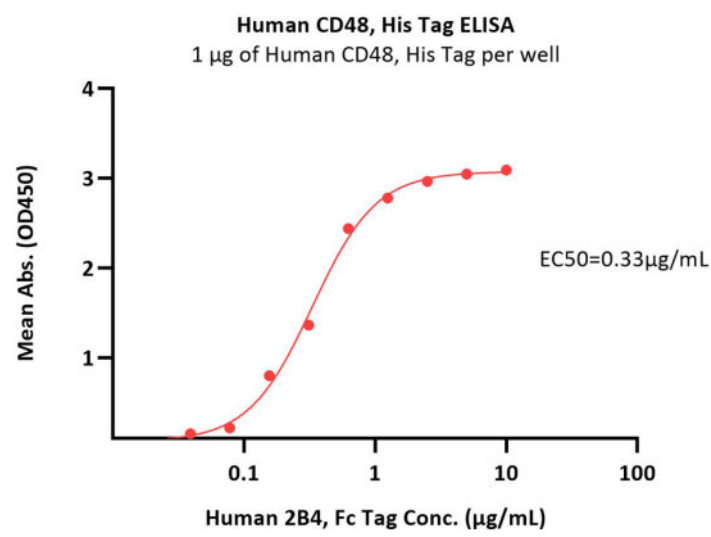
SDS-PAGE

Human CD48, His Tag on SDS-PAGE under reducing (R) condition. The gel was stained overnight with Coomassie Blue. The purity of the protein is greater than 95%.

Bioactivity-ELISA**SEC-MALS**

The purity of Human CD48, His Tag (Cat. No. BC1-H5226) is more than 90% and the molecular weight of this protein is around 32-42 kDa verified by SEC-MALS.

[Report](#)



Immobilized Human CD48, His Tag (Cat. No. BC1-H5226) at 10 µg/mL (100 µL/well) can bind Human 2B4, Fc Tag (Cat. No. 2B4-H5255) with a linear range of 0.039-0.625 µg/mL (QC tested).

Background

CD48 antigen is also known as Signaling lymphocytic activation molecule 2, SLAM family member 2 (SLAMF2), Leukocyte antigen MEM-102, BCM1 surface antigen, B-lymphocyte activation marker BLAST-1. CD48 is a 65 kDa GPI-linked protein which belongs to the CD2 subfamily of immunoglobulin superfamily molecules. CD48 antigen contains two Ig-like C2-type (immunoglobulin-like) domains and two Ig-like V-type (immunoglobulin-like) domain. CD48 interacts with CD244 in an heterophilic manner. CD48 is ligand for CD2. CD48 might facilitate interaction between activated lymphocytes. CD48 is probably involved in regulating T-cell activation.

Clinical and Translational Updates

Please contact us via TechSupport@acrobiosystems.com if you have any question on this product.