

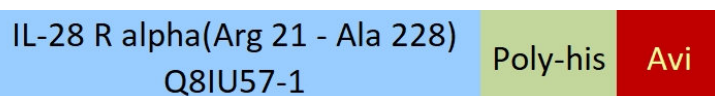
**Synonym**

Interferon lambda receptor 1,IFN-lambda receptor 1,IFN-lambda-R1,Cytokine receptor class-II member 12,Cytokine receptor family 2 member 12,CRF2-12,Interleukin-28 receptor subunit alpha,IL-28 receptor subunit alpha,IL-28R-alpha,IL-28RA,Likely interleukin or cytokine receptor 2,LICR2,IFNLR1,IL28RA, LICR2

Source

Biotinylated Human IL-28 R alpha Protein, His,Avitag(ILR-H82E4) is expressed from human 293 cells (HEK293). It contains AA Arg 21 - Ala 228 (Accession # [Q8IU57-1](#)).

Predicted N-terminus: Arg 21

Molecular Characterization

This protein carries a polyhistidine tag at the C-terminus, followed by an Avi tag (Avitag™).

The protein has a calculated MW of 27.2 kDa. The protein migrates as 40-43 kDa when calibrated against [Star Ribbon Pre-stained Protein Marker](#) under reducing (R) condition (SDS-PAGE) due to glycosylation.

Labeling

Biotinylation of this product is performed using Avitag™ technology. Briefly, the single lysine residue in the Avitag is enzymatically labeled with biotin.

Protein Ratio

Passed as determined by the HABA assay / binding ELISA.

Endotoxin

Less than 1.0 EU per µg by the LAL method.

Purity

>90% as determined by SDS-PAGE.

Formulation

Lyophilized from 0.22 µm filtered solution in PBS, pH7.4 with trehalose as protectant.

Contact us for customized product form or formulation.

Reconstitution

Please see Certificate of Analysis for specific instructions.

For best performance, we strongly recommend you to follow the reconstitution protocol provided in the CoA.

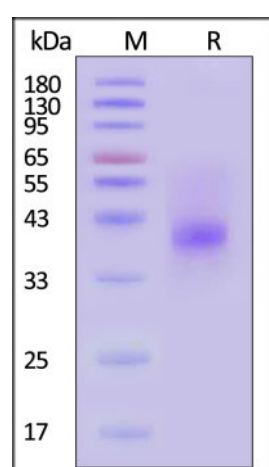
Storage

For long term storage, the product should be stored at lyophilized state at -20°C or lower.

Please avoid repeated freeze-thaw cycles.

This product is stable after storage at:

- -20°C to -70°C for 12 months in lyophilized state;
- -70°C for 3 months under sterile conditions after reconstitution.

SDS-PAGE

Biotinylated Human IL-28 R alpha Protein, His,Avitag on SDS-PAGE under reducing (R) condition. The gel was stained with Coomassie Blue. The purity

Discounts, Gifts,
and more!





of the protein is greater than 90% (With [Star Ribbon Pre-stained Protein Marker](#)).

Background

IL-28 R alpha (Interleukin-28 receptor subunit alpha) also known as IFNLR1 (IFN-lambda receptor 1), it heterodimerizes with another subunit, IL-10RB, to form a type II cytokine receptor, which binds IL-28A, IL-28B and IL-29. These ligands, which are distantly related to class I interferons, are activated upon viral infection and trigger the JAK-STAT signaling pathway to exert antiviral activity. The ligand/receptor complex stimulates the activation of the JAK/STAT signaling pathway leading to the expression of IFN-stimulated genes (ISG), which contribute to the antiviral state. Determines the cell type specificity of the lambda interferon action. Shows a more restricted pattern of expression in the epithelial tissues thereby limiting responses to lambda interferons primarily to epithelial cells of the respiratory, gastrointestinal, and reproductive tracts.

Clinical and Translational Updates

Please contact us via TechSupport@acrobiosystems.com if you have any question on this product.

Discounts, Gifts,
and more!

