



### Source

Unconjugated Human HLA-A\*02:01&B2M&MAGE-A4 (GVYDGREHTV) Complex Protein(HLM-H52H6) is expressed from human 293 cells (HEK293). It contains AA Gly 25 - Ile 308 (HLA-A\*02:01) & Ile 21 - Met 119 (B2M) & GVYDGREHTV peptide (Accession # [AAA59606.1](#) (HLA-A\*02:01) & [P61769-1](#) (B2M) & GVYDGREHTV).  
Predicted N-terminus: Gly 25 & Ile 21

### Molecular Characterization

Human HLA-A\*02:01&B2M&MAGE-A4 (GVYDGREHTV) Complex Protein is produced by co-expression of HLA and B2M loaded with MAGE-A4 peptide.

This protein carries a polyhistidine tag at the C-terminus, followed by an Avi tag (Avitag™), and it is not biotinylated.

The protein has a calculated MW of 36.3 kDa and 11.7 kDa. The protein migrates as 40-45 kDa and 12 kDa under reducing (R) condition (SDS-PAGE) due to glycosylation.

### Endotoxin

Less than 1.0 EU per µg by the LAL method.

### Purity

>90% as determined by SDS-PAGE.

### Formulation

Lyophilized from 0.22 µm filtered solution in PBS, pH7.4 with trehalose as protectant.

Contact us for customized product form or formulation.

### Reconstitution

Please see Certificate of Analysis for specific instructions.

*For best performance, we strongly recommend you to follow the reconstitution protocol provided in the CoA.*

### Storage

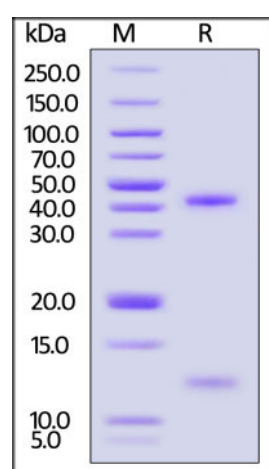
For long term storage, the product should be stored at lyophilized state at -20°C or lower.

*Please avoid repeated freeze-thaw cycles.*

This product is stable after storage at:

- -20°C to -70°C for 12 months in lyophilized state;
- -70°C for 3 months under sterile conditions after reconstitution.

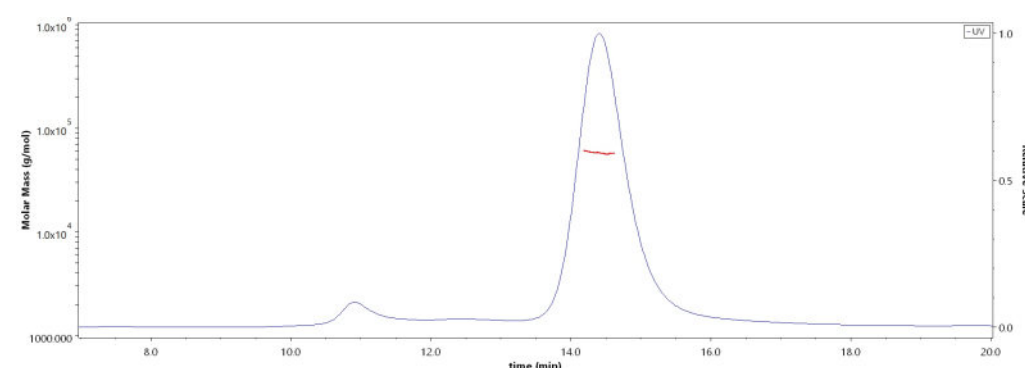
### SDS-PAGE



Unconjugated Human HLA-A\*02:01&B2M&MAGE-A4 (GVYDGREHTV) Complex Protein on SDS-PAGE under reducing (R) condition. The gel was stained with Coomassie Blue. The purity of the protein is greater than 90%.

### Bioactivity-ELISA

### SEC-MALS



The purity of Unconjugated Human HLA-A\*02:01&B2M&MAGE-A4 (GVYDGREHTV) Complex Protein (Cat. No. HLM-H52H6) is more than 85% and the molecular weight of this protein is around 45-60 kDa verified by SEC-MALS.

[Report](#)

Discounts, Gifts,  
and more!



# Unconjugated Human HLA-A\*02:01&B2M&MAGE-A4 (GVYDGREHTV) Complex Protein (Monomer, MALS verified)

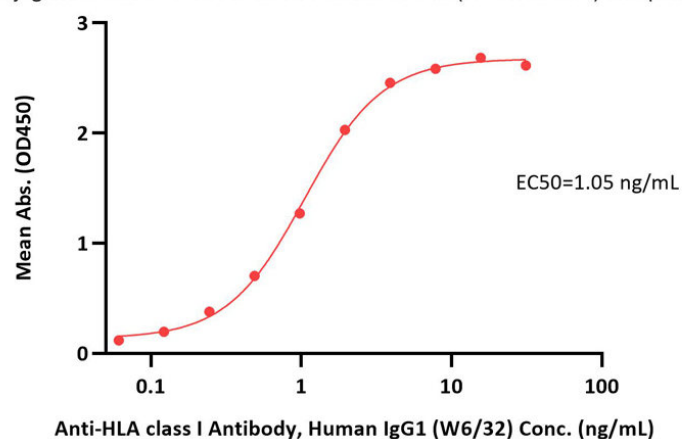


BIOSYSTEMS  
**Acro**

Catalog # HLM-H52H6

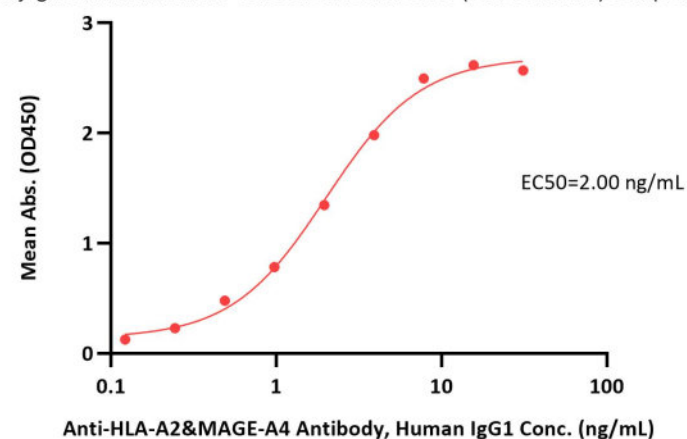
## Unconjugated Human HLA-A\*02:01&B2M&MAGE-A4 (GVYDGREHTV) Complex Protein ELISA

0.1 µg of Unconjugated Human HLA-A\*02:01&B2M&MAGE-A4 (GVYDGREHTV) Complex Protein per well



## Unconjugated Human HLA-A\*02:01&B2M&MAGE-A4 (GVYDGREHTV) Complex Protein ELISA

0.1 µg of Unconjugated Human HLA-A\*02:01&B2M&MAGE-A4 (GVYDGREHTV) Complex Protein per well

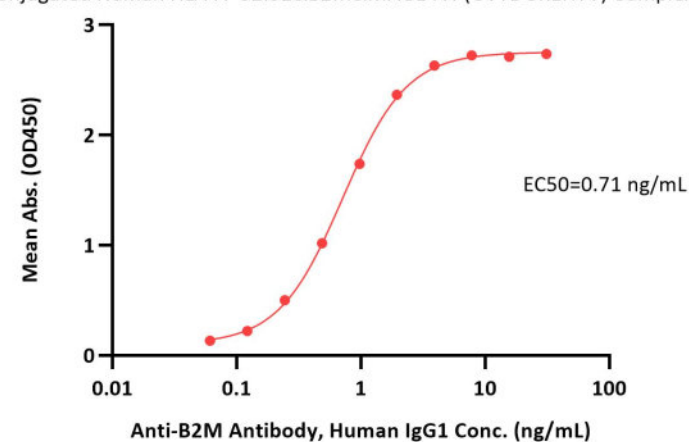


Immobilized Unconjugated Human HLA-A\*02:01&B2M&MAGE-A4 (GVYDGREHTV) Complex Protein (Cat. No. HLM-H52H6) at 1 µg/mL (100 µL/well) can bind Anti-HLA class I Antibody, Human IgG1 (W6/32) with a linear range of 0.1-2 ng/mL (QC tested).

Immobilized Unconjugated Human HLA-A\*02:01&B2M&MAGE-A4 (GVYDGREHTV) Complex Protein (Cat. No. HLM-H52H6) at 1 µg/mL (100 µL/well) can bind Anti-HLA-A2&MAGE-A4 Antibody, Human IgG1 with a linear range of 0.1-4 ng/mL (QC tested).

## Unconjugated Human HLA-A\*02:01&B2M&MAGE-A4 (GVYDGREHTV) Complex Protein ELISA

0.1 µg of Unconjugated Human HLA-A\*02:01&B2M&MAGE-A4 (GVYDGREHTV) Complex Protein per well



Immobilized Unconjugated Human HLA-A\*02:01&B2M&MAGE-A4 (GVYDGREHTV) Complex Protein (Cat. No. HLM-H52H6) at 1 µg/mL (100 µL/well) can bind Anti-B2M Antibody, Human IgG1 with a linear range of 0.06-1 ng/mL (Routinely tested).

## Background

The MAGE A4 antigen is a cancer-testis antigen and is expressed intracellularly in various solid tumor tissues, MAGE A4230-239 peptide (GVYDGREHTV) is a cytotoxic T lymphocyte (CTL) epitope presented by HLA-A2. The Human HLA-A\*0201 MAGE-A4 (GVYDGREHTV) complex protein is a complex of HLA-A\*0201 of the MHC Class I, B2M, and GVYDGREHTV peptide of the MAGE-A4.

## Clinical and Translational Updates

Please contact us via [TechSupport@acrobiosystems.com](mailto:TechSupport@acrobiosystems.com) if you have any question on this product.

Discounts, Gifts,  
and more!



[www.acrobiosystems.com](http://www.acrobiosystems.com)

11/22/2023