

Synonym

GHR,GHBP,GH receptor

Source

Human GHR, Fc Tag(GHR-H5257) is expressed from human 293 cells (HEK293). It contains AA Ala 27 - Tyr 264 (Accession # [P10912](#)).

Predicted N-terminus: Ala 27

Molecular Characterization

GHR(Ala 27 - Tyr 264) P10912	Fc(Pro 100 - Lys 330) P01857
---------------------------------	---------------------------------

This protein carries a human IgG1 Fc tag at the C-terminus

The protein has a calculated MW of 54.3 kDa. The protein migrates as 66-85 kDa under reducing (R) condition, and 135-160 kDa under non-reducing (NR) condition (SDS-PAGE) due to glycosylation.

Endotoxin

Less than 1.0 EU per µg by the LAL method.

Purity

>95% as determined by SDS-PAGE.

Formulation

Lyophilized from 0.22 µm filtered solution in PBS, pH7.4 with trehalose as protectant.

Contact us for customized product form or formulation.

Reconstitution

Please see Certificate of Analysis for specific instructions.

For best performance, we strongly recommend you to follow the reconstitution protocol provided in the CoA.

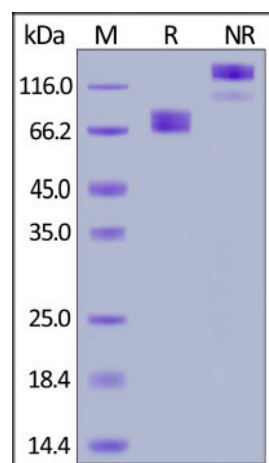
Storage

For long term storage, the product should be stored at lyophilized state at -20°C or lower.

Please avoid repeated freeze-thaw cycles.

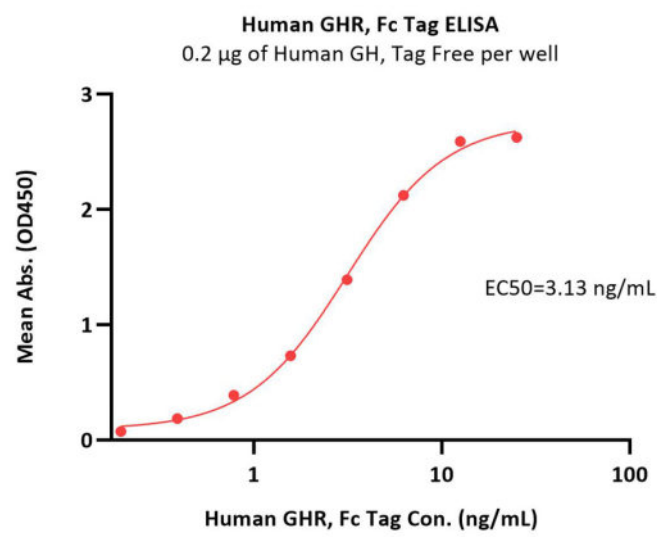
This product is stable after storage at:

- -20°C to -70°C for 12 months in lyophilized state;
- -70°C for 3 months under sterile conditions after reconstitution.

SDS-PAGE

Human GHR, Fc Tag on SDS-PAGE under reducing (R) and non-reducing (NR) conditions. The gel was stained with Coomassie Blue. The purity of the protein is greater than 95%.

Bioactivity-ELISA



Immobilized Human GH, Tag Free at 2 µg/mL (100 µL/well) can bind Human GHR, Fc Tag (Cat. No. GHR-H5257) with a linear range of 0.2-3 ng/mL (QC tested).

Background

Growth hormone receptor (GHR) is also known as somatotropin receptor, growth hormone-binding protein (GHBR), which belongs to the type I cytokine receptor family or Type 1 subfamily. GHR / GHBR is expressed in various tissues with high expression in liver and skeletal muscle. The soluble form (GHBP) is produced by phorbol ester-promoted proteolytic cleavage at the cell surface (shedding) by ADAM17/TACE. GHR is receptor for pituitary gland growth hormone involved in regulating postnatal body growth. On ligand binding, couples to the JAK2/STAT5 pathway. The soluble form (GHBP) acts as a reservoir of growth hormone in plasma and may be a modulator/inhibitor of GH signaling.

Clinical and Translational Updates

Please contact us via TechSupport@acrobiosystems.com if you have any question on this product.