



Source

Monoclonal Anti-G4S linker Antibody, Rabbit IgG (016) is a rabbit monoclonal antibody recombinantly expressed from human 293 cells (HEK293), which provides higher batch consistency and long term security of supply. It shows superior performance in flow cytometry assays with higher affinity and better specificity.

Application

Flow Cytometry (Evaluation of cell surface expressed CARs of varying specificity containing a G4S linker within the scFv of the extracellular domain).

Clone

016

Species

Rabbit

Isotype

Rabbit IgG | Rabbit Kappa

Specificity

Specifically recognizes the scFv-based CARs containing a G4S linker.

Conjugate

PE

Excitation Wavelength: 488 nm / 561 nm

Emission Wavelength: 575 nm

Recommended Dilution

1:50

Formulation

Lyophilized from 0.22 µm filtered solution in PBS, 0.03% Proclin 300, pH7.4, 0.2% BSA with trehalose as protectant.

Contact us for customized product form or formulation.

Reconstitution

Please see Certificate of Analysis for specific instructions.

For best performance, we strongly recommend you to follow the reconstitution protocol provided in the CoA.

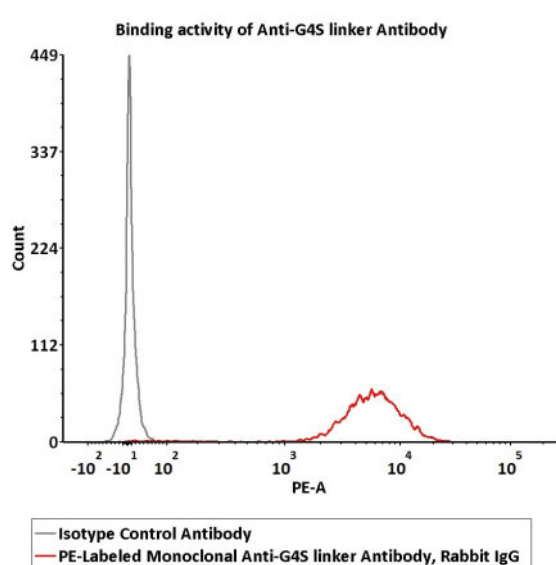
Storage

Please protect from light and avoid repeated freeze-thaw cycles.

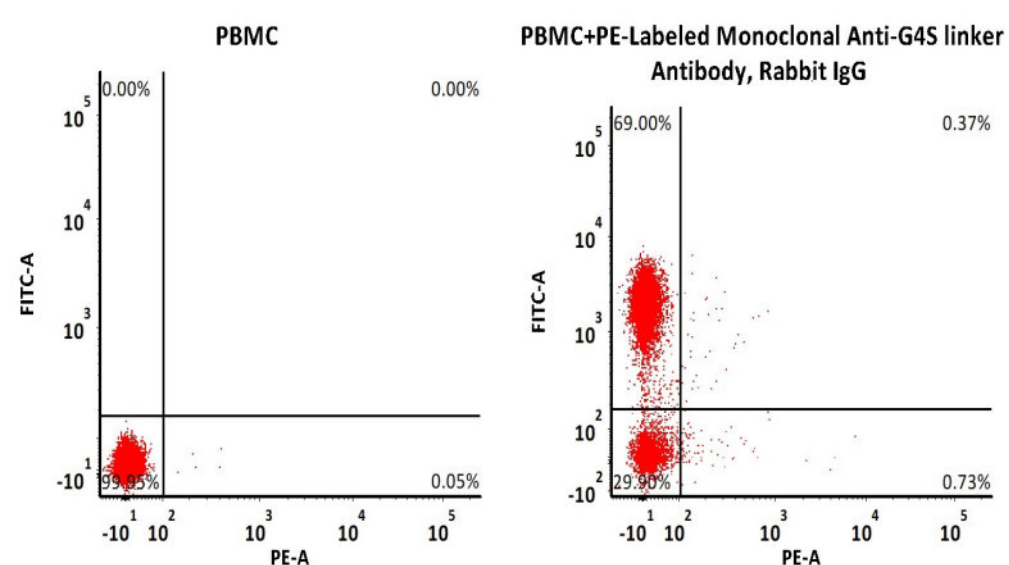
This product is stable after storage at:

- -20°C to -70°C for 24 months in lyophilized state;
- -70°C for 12 months after reconstitution.
- 2-8°C for 12 months after reconstitution.

Bioactivity-FACS



Flow cytometric analysis of Anti-MSLN CAR-293 cells staining with PE-Labeled Monoclonal Anti-G4S linker Antibody, Rabbit IgG (016) (Cat. No. G4S-PFMY25) at 1:50 dilution (2 µL of the antibody stock solution corresponds to labeling of 1e6 cells in a final volume of 100 µL), compared



Non-specificity of PE-Labeled Monoclonal Anti-G4S linker Antibody, Rabbit IgG (016) (Cat. No. G4S-PFMY25) binding to CD3+ cells present in human PBMC. 5e5 of human PBMCs were simultaneously stained with FITC-labeled anti-CD3 antibody and PE-Labeled Monoclonal Anti-G4S linker Antibody (2

Discounts, Gifts,
and more!



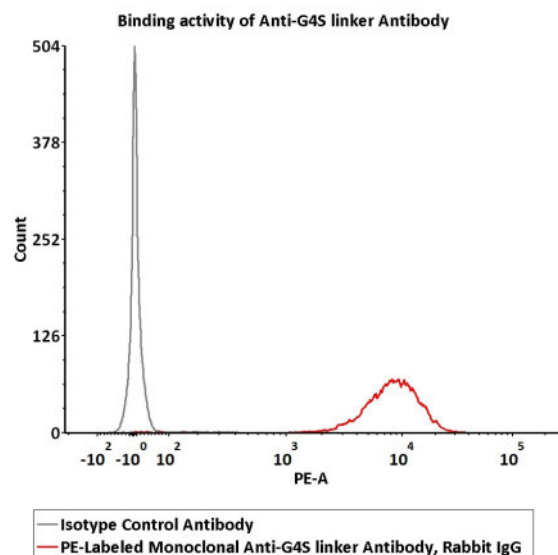
PE-Labeled Monoclonal Anti-G4S linker Antibody, Rabbit IgG (016) (0.03% Proclin)

Catalog # G4S-PFMY25

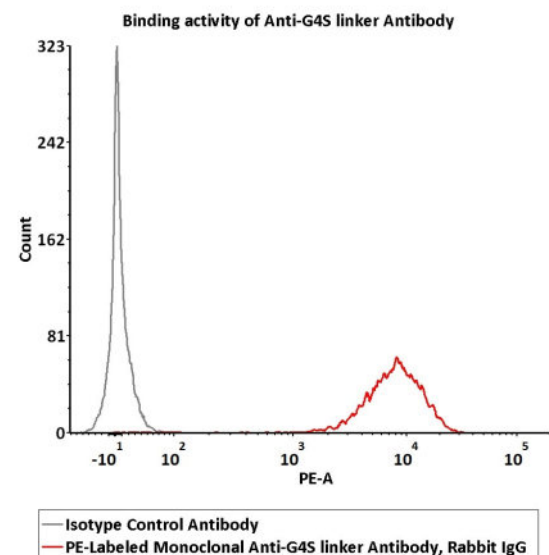


BIOSYSTEMS
Acro

with isotype control antibody. PE signal was used to evaluate the binding activity (QC tested).



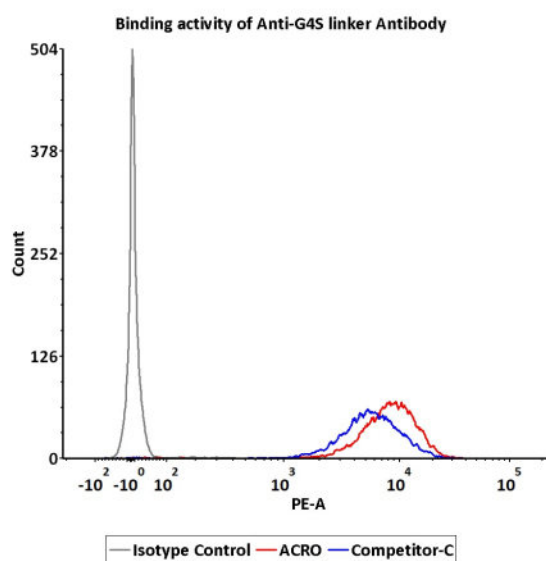
μ L of the antibody stock solution corresponds to labeling of 5×10^5 cells in a final volume of 100 μ L) and washed and then analyzed with FACS. Both FITC and PE positive signals was used to evaluate the non-specific binding activity to human CD3⁺ cells (Routinely tested).



Flow cytometric analysis of Anti-CD19 CAR-293 cells staining with PE-Labeled Monoclonal Anti-G4S linker Antibody, Rabbit IgG (016) (Cat. No. G4S-PFMY25) at 1:50 dilution (2 μ L of the antibody stock solution corresponds to labeling of 1×10^6 cells in a final volume of 100 μ L), compared with isotype control antibody. PE signal was used to evaluate the binding activity (Routinely tested).

Flow cytometric analysis of Anti-CD22 CAR-293 cells staining with PE-Labeled Monoclonal Anti-G4S linker Antibody, Rabbit IgG (016) (Cat. No. G4S-PFMY25) at 1:50 dilution (2 μ L of the antibody stock solution corresponds to labeling of 1×10^6 cells in a final volume of 100 μ L), compared with isotype control antibody. PE signal was used to evaluate the binding activity (Routinely tested).

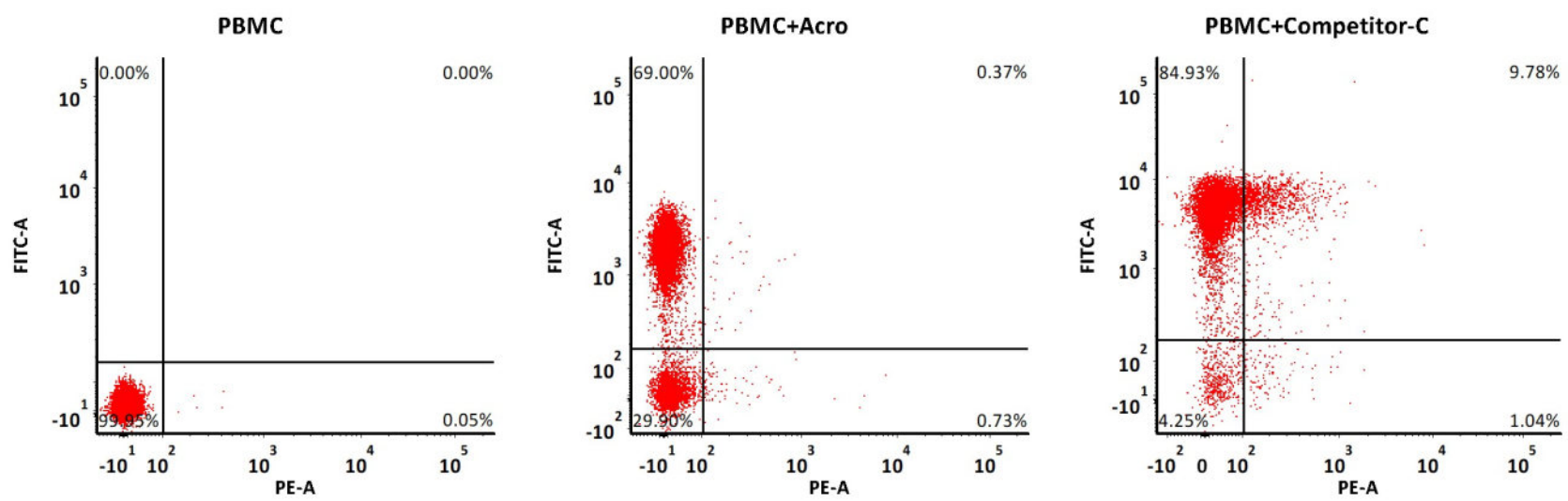
Compared Data



Flow cytometric analysis of Anti-CD19 CAR-293 cells staining with PE-Labeled Monoclonal Anti-G4S linker Antibodies. PE signal was used to evaluate the binding activity of anti-G4S linker antibody. The biological activity level of ACRO is superior to competitor C (Routinely tested).

Discounts, Gifts,
and more!





Non-specificity of PE-Labeled Monoclonal Anti-G4S linker Antibody, Rabbit IgG1 (016) (Cat. No. G4S-PFMY25) binding to CD3+ cells present in human PBMC. ACRO shows only 0.37% non-specificity signal, much lower than competitor C (9.78%).

Background

The G4S linker is emerged as the most common linking peptides for scFvs. It is composed of the repeated sequence (Gly-Gly-Gly-Gly-Ser) and commonly found as either a 15-mer (G4S)₃ or 20-mer(G4S)₄ within scFv fragments. The G4S linker has become an integral part of the vast majority of CARs as it links the VH and VL recognition domains of scFvs. The G4S linker is commonly used in CARs targeting solid tumor antigens, such as HER2 and CEA, while the whitlow/218 linker peptide is predominantly used in CAR constructs targeting hematological malignancies such as CD19 CAR products.

Clinical and Translational Updates

Discounts, Gifts,
and more!

