

**Synonym**

FETUB,Fetuin-B,16G2,Gugu

**Source**

Human Fetuin B, His Tag(FEB-H52H7) is expressed from human 293 cells (HEK293). It contains AA Cys 16 - Pro 382 (Accession # [AAH69670](#) ).

Predicted N-terminus: Cys 16

**Molecular Characterization**

Fetuin B(Cys 16 - Pro 382 ) AAH69670	Poly-his
---	----------

This protein carries a polyhistidine tag at the C-terminus

The protein has a calculated MW of 42.4 kDa. The protein migrates as 53-58 kDa under reducing (R) condition (SDS-PAGE) due to glycosylation.

**Endotoxin**

Less than 1.0 EU per µg by the LAL method.

**Purity**

>95% as determined by SDS-PAGE.

**Formulation**

Lyophilized from 0.22 µm filtered solution in 50 mM Tris, 150 mM NaCl, pH8.0 with trehalose as protectant.

Contact us for customized product form or formulation.

**Reconstitution**

Please see Certificate of Analysis for specific instructions.

*For best performance, we strongly recommend you to follow the reconstitution protocol provided in the CoA.*

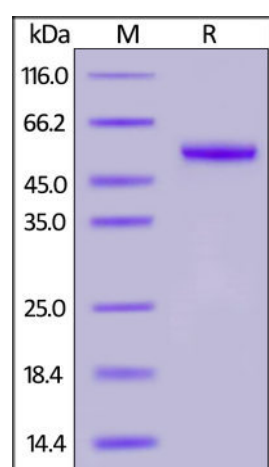
**Storage**

For long term storage, the product should be stored at lyophilized state at -20°C or lower.

*Please avoid repeated freeze-thaw cycles.*

This product is stable after storage at:

- -20°C to -70°C for 12 months in lyophilized state;
- -70°C for 3 months under sterile conditions after reconstitution.

**SDS-PAGE**

Human Fetuin B, His Tag on SDS-PAGE under reducing (R) condition. The gel was stained overnight with Coomassie Blue. The purity of the protein is greater than 95%.

**Background**

Fetuin-B (FETUB), a second member of the fetuin family in mammals, is also known as Fetuin-like protein IRL685, 16G2 and Gugu, which is expressed in liver and testis and contains 2 cystatin fetuin-B-type domains. FETUB is a protease inhibitor required for egg fertilization. FETUB is also required to prevent premature zona pellucida hardening before fertilization, probably by inhibiting the protease activity of ASTL, a protease that mediates the cleavage of ZP2 and triggers zona pellucida hardening (By similarity). As a liver-derived plasma protein, FETUB is essential for fertilization.

**Clinical and Translational Updates**

Please contact us via [TechSupport@acrobiosystems.com](mailto:TechSupport@acrobiosystems.com) if you have any question on this product.