

# Human Cardiotrophin 1 Protein, His Tag (MALS verified)

Catalog # CA1-H5243



BIOSYSTEMS  
**Acro**  
Surprise Inside!

## Synonym

CT-1, CT1

## Source

Human Cardiotrophin 1 Protein, His Tag(CA1-H5243) is expressed from human 293 cells (HEK293). It contains AA Ser 2 - Ala 201 (Accession # [Q16619-1](#)).

Predicted N-terminus: His

## Molecular Characterization

Poly-his Cardiotrophin 1(Ser 2 - Ala 201)  
Q16619-1

This protein carries a polyhistidine tag at the N-terminus.

The protein has a calculated MW of 23 kDa. The protein migrates as 27-30 kDa when calibrated against [Star Ribbon Pre-stained Protein Marker](#) under reducing (R) condition (SDS-PAGE) due to glycosylation.

## Endotoxin

Less than 1.0 EU per µg by the LAL method.

## Purity

>90% as determined by SDS-PAGE.

>90% as determined by SEC-MALS.

## Formulation

Lyophilized from 0.22 µm filtered solution in 50 mM HAC, pH3.0 with trehalose as protectant.

Contact us for customized product form or formulation.

## Reconstitution

Please see Certificate of Analysis for specific instructions.

*For best performance, we strongly recommend you to follow the reconstitution protocol provided in the CoA.*

## Storage

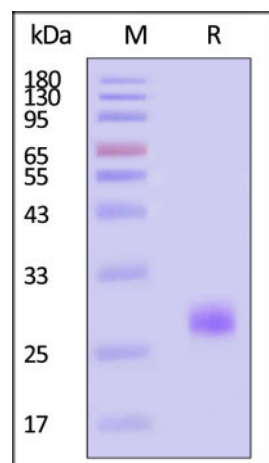
For long term storage, the product should be stored at lyophilized state at -20°C or lower.

*Please avoid repeated freeze-thaw cycles.*

This product is stable after storage at:

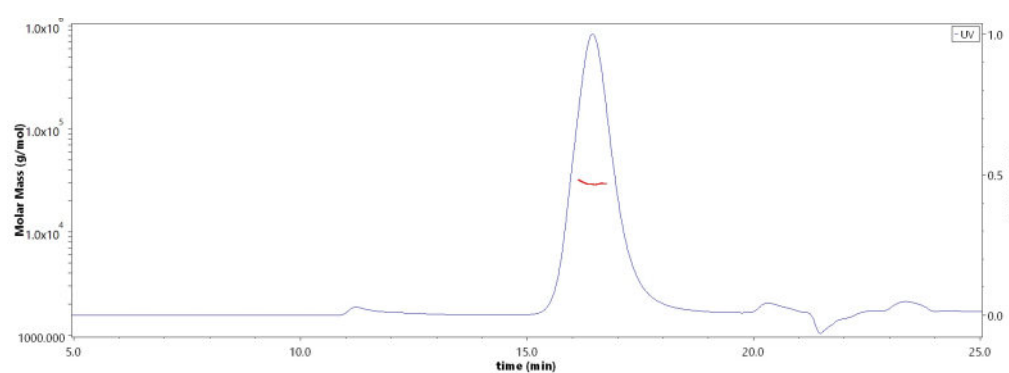
- -20°C to -70°C for 12 months in lyophilized state;
- -70°C for 3 months under sterile conditions after reconstitution.

## SDS-PAGE



Human Cardiotrophin 1 Protein, His Tag on SDS-PAGE under reducing (R) condition. The gel was stained with Coomassie Blue. The purity of the protein is greater than 90% (With [Star Ribbon Pre-stained Protein Marker](#)).

## SEC-MALS



The purity of Human Cardiotrophin 1 Protein, His Tag (Cat. No. CA1-H5243) is more than 90% and the molecular weight of this protein is around 25-35 kDa verified by SEC-MALS.

[Report](#)

## Background

The protein encoded by this gene is a secreted cytokine that induces cardiac myocyte hypertrophy in vitro. It has been shown to bind and activate the ILST/gp130 receptor. Two transcript variants encoding different isoforms have been found for this gene.

Discounts, Gifts,  
and more!



» [www.acrobiosystems.com](http://www.acrobiosystems.com)

8/1/2024

# Human Cardiotrophin 1 Protein, His Tag (MALS verified)

Catalog # CA1-H5243



## Clinical and Translational Updates

Discounts, Gifts,  
and more!



[www.acrobiosystems.com](http://www.acrobiosystems.com)

8/1/2024